

Product datasheet for CS807140

Tissue FFPE Sections, Endometrium

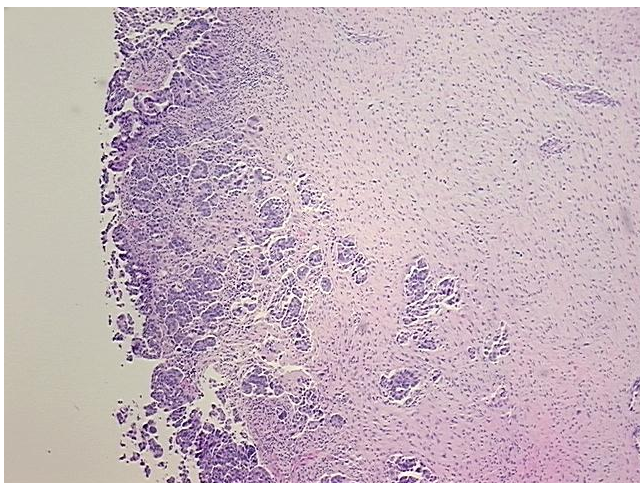
Product data:

Product Type:	FFPE Sections
Disease State:	Cancer
Diagnosis Category:	Endometrial Cancer
Tissue:	Endometrium
Frozen Sample ID:	PA0F334267
Case ID:	CU0000006138
Tissue of Origin:	Endometrium
Site of Finding:	Fallopian tube
Appearance:	T
Sample Diagnosis (from Pathology Verification):	Adenocarcinoma of endometrium, papillary serous
Normal:	60%
Lesional:	0%
Tumor:	30%
Tumor Hypo/Acellular Stroma:	0%
Tumor Hypercellular Stroma:	10%
Necrosis:	0%
Pathology Verification notes from H&E review:	Tumor: primary endometrial origin with involvement of the fallopian tubes, ovaries as well as the lower uterine segment; Non Tumor Structures: 100% Fallopian tube
CASE Diagnosis (from medical center path report):	Adenocarcinoma of endometrium, papillary serous
Age:	49
Gender:	Female
Tumor Grade:	FIGO G3: Poorly differentiated

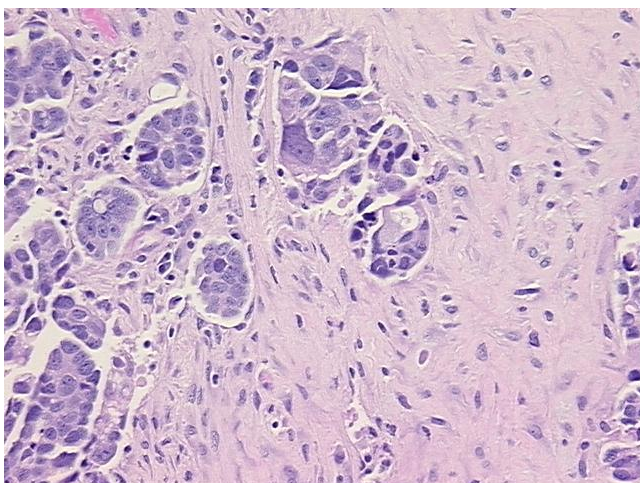


[View online »](#)

Minimum Stage Grouping:	IIIC
T (Extent of Primary Tumor):	T3a
N (Lymph node metastasis):	N1
M (Distant metastasis):	MX
Storage:	Store FFPE tissue sections at +4°C.
Stability:	All FFPE tissue sections are stable for 1 year from date of purchase.

Product images:

4x Image



20x Image