

Product datasheet for **CS806876**

Tissue FFPE Sections, Breast

Product data:

| | |
|---|---|
| Product Type: | FFPE Sections |
| Disease State: | Other Disease |
| Diagnosis Category: | Foreign Body Reaction |
| Tissue: | Breast |
| Frozen Sample ID: | PA15476D20 |
| Case ID: | CU0000006054 |
| Tissue of Origin: | Breast |
| Site of Finding: | Breast |
| Appearance: | L |
| Sample Diagnosis (from Pathology Verification): | Foreign body reaction |
| Normal: | 30% |
| Lesional: | 70% |
| Tumor: | 0% |
| Tumor Hypo/Acellular Stroma: | 0% |
| Tumor Hypercellular Stroma: | 0% |
| Necrosis: | 0% |
| Pathology Verification notes from H&E review: | lesion: 50% foreign-body giant cell granuloma and foamy histiocytes, 50% fibrovascular stroma |
| CASE Diagnosis (from medical center path report): | Carcinoma in situ of breast, ductal and lobular |
| Age: | 77 |
| Gender: | Female |
| Tumor Grade: | Not Reported |



[View online »](#)

T (Extent of Primary Tumor): Tis

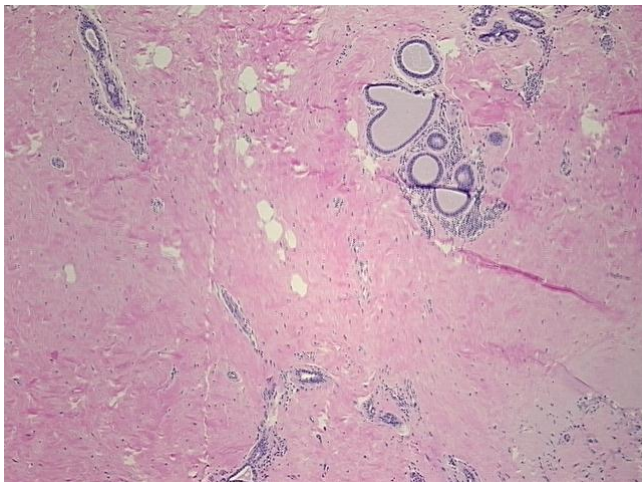
N (Lymph node metastasis): N0

M (Distant metastasis): MX

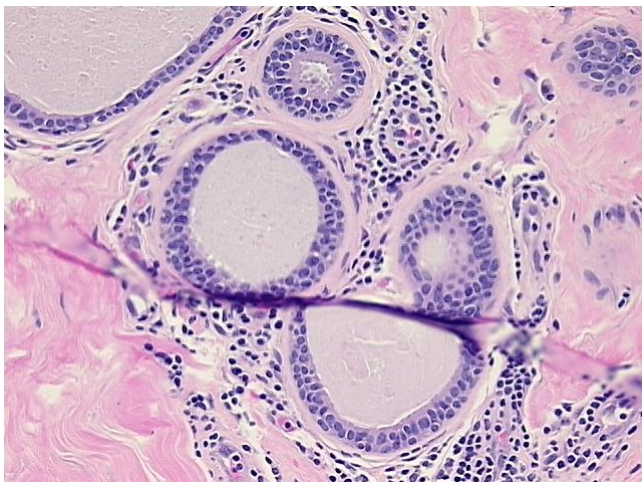
Storage: Store FFPE tissue sections at +4°C.

Stability: All FFPE tissue sections are stable for 1 year from date of purchase.

Product images:



4x Image



20x Image