

Product datasheet for **CS806724**

Tissue FFPE Sections, Ileum

Product data:

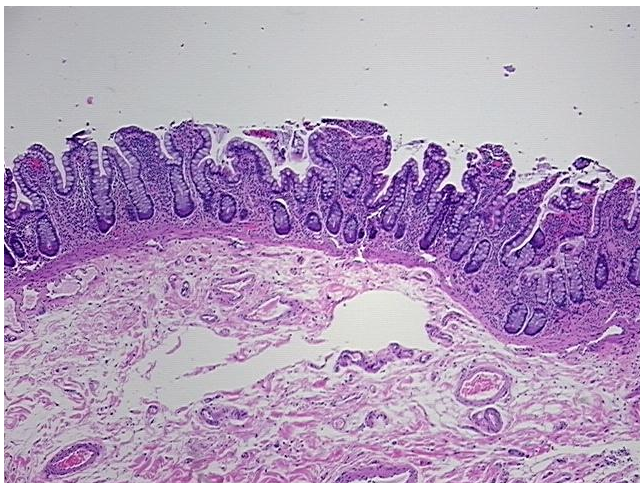
| | |
|---|---------------------------------------|
| Product Type: | FFPE Sections |
| Disease State: | Normal |
| Diagnosis Category: | Normal |
| Tissue: | Small intestine |
| Frozen Sample ID: | PA15476915 |
| Case ID: | CU0000005992 |
| Tissue of Origin: | Ileum |
| Site of Finding: | Ileum |
| Appearance: | R |
| Sample Diagnosis (from Pathology Verification): | Within normal limits |
| Normal: | 100% |
| Lesional: | 0% |
| Tumor: | 0% |
| Tumor Hypo/Acellular Stroma: | 0% |
| Tumor Hypercellular Stroma: | 0% |
| Necrosis: | 0% |
| Pathology Verification notes from H&E review: | 20% mucosa, 25% submucosa, 55% muscle |
| CASE Diagnosis (from medical center path report): | Crohns disease |
| Age: | 29 |
| Gender: | Female |
| Storage: | Store FFPE tissue sections at +4°C. |



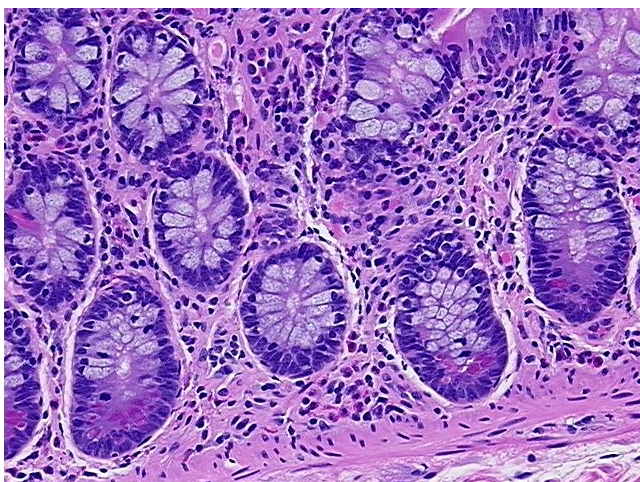
[View online »](#)

Stability: All FFPE tissue sections are stable for 1 year from date of purchase.

Product images:



4x Image



20x Image