

Product datasheet for CS806711

Tissue FFPE Sections, Myometrium

Product data:

Product Type:	FFPE Sections
Disease State:	Other Disease
Diagnosis Category:	Adenosis
Tissue:	Myometrium
Frozen Sample ID:	PA000058D2
Case ID:	CU0000005989
Tissue of Origin:	Myometrium
Site of Finding:	Myometrium
Appearance:	L
Sample Diagnosis (from Pathology Verification):	Adenomyosis of myometrium
Normal:	90%
Lesional:	10%
Tumor:	0%
Tumor Hypo/Acellular Stroma:	0%
Tumor Hypercellular Stroma:	0%
Necrosis:	0%
Pathology Verification notes from H&E review:	lesion: 40% endometrial glands, 60% endometrial stroma; normal: 100% myometrium
CASE Diagnosis (from medical center path report):	Endometrium, secretory
Age:	40
Gender:	Female
Storage:	Store FFPE tissue sections at +4°C.



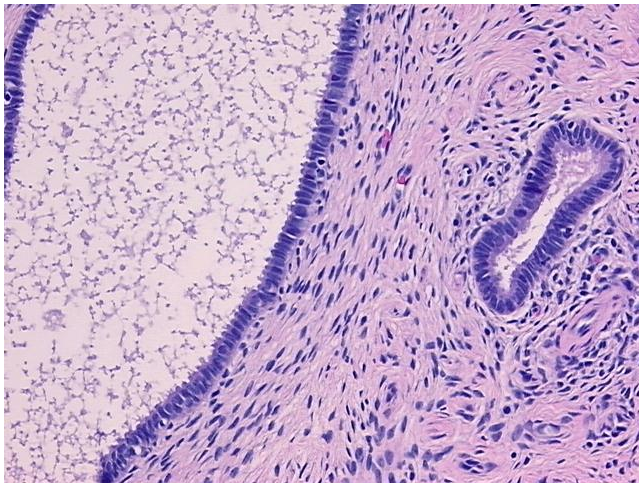
[View online »](#)

Stability: All FFPE tissue sections are stable for 1 year from date of purchase.

Product images:



4x Image



20x Image