

Product datasheet for **CS806594**

Tissue FFPE Sections, Soft tissue

Product data:

Product Type:	FFPE Sections
Disease State:	Other Disease
Diagnosis Category:	Benign Tumors
Tissue:	Soft tissue
Frozen Sample ID:	PA00004C15
Case ID:	CU0000005916
Tissue of Origin:	Soft tissue
Site of Finding:	Colon: sigmoid
Appearance:	T
Sample Diagnosis (from Pathology Verification):	Tumor of colon, inflammatory myofibroblastic
Normal:	0%
Lesional:	0%
Tumor:	95%
Tumor Hypo/Acellular Stroma:	0%
Tumor Hypercellular Stroma:	5%
Necrosis:	0%
Pathology Verification notes from H&E review:	Tumor: with atypical features, with prominent lymphoid aggregates
CASE Diagnosis (from medical center path report):	Tumor of colon, inflammatory myofibroblastic, atypical
Age:	50
Gender:	Male



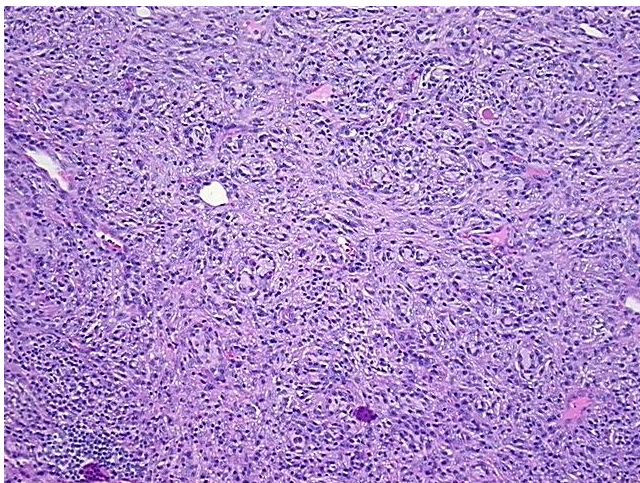
[View online »](#)

Diagnostic Test Results: Vimentin ~ VIM ! by IHC,Positive; S100 protein,Negative; Factor XIIIa,Positive; Desmin ! by IHC,Negative; CD68 ~ KP1 ! by IHC,Positive, focal; CD34 ~ HPCA ! by IHC,Positive; MSA ~ Muscle Specific Actin,Negative; CD117 ~ C-kit ~ SCFR ! by IHC,P

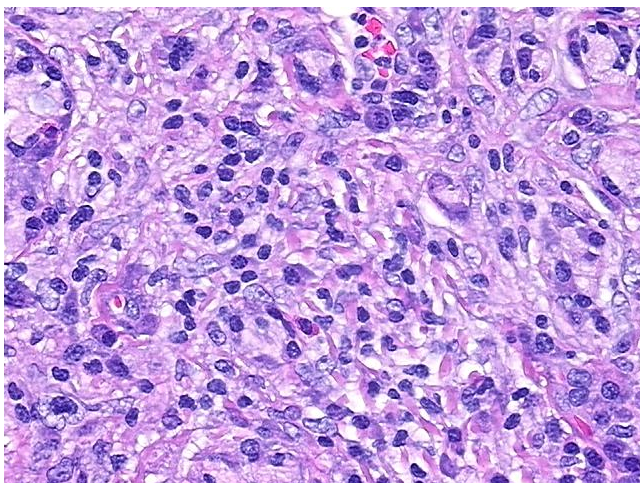
Storage: Store FFPE tissue sections at +4°C.

Stability: All FFPE tissue sections are stable for 1 year from date of purchase.

Product images:



4x Image



20x Image