

## Product datasheet for **CS806458**

### Tissue FFPE Sections, Joint

#### Product data:

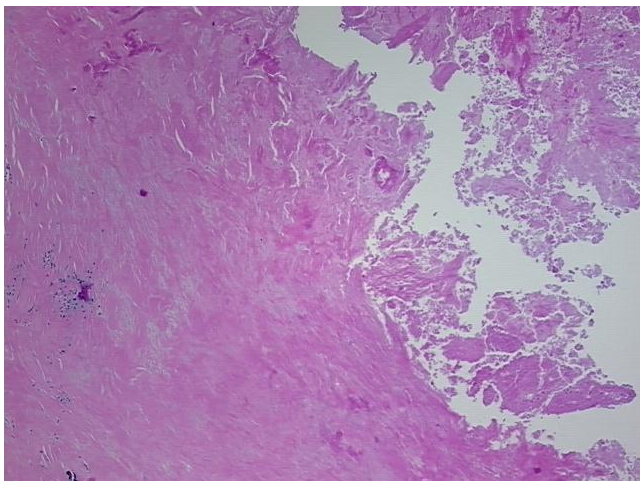
|   |  |
|---|--|
| Product Type:                                     | FFPE Sections  |
| Disease State:                                    | Other Disease  |
| Diagnosis Category:                               | Arthritis  |
| Tissue:   | Joint  |
| Frozen Sample ID:                                 | PA000055C7   |
| Case ID:  | CU0000005857   |
| Tissue of Origin:                                 | Joint  |
| Site of Finding:                                  | Joint  |
| Appearance:                                       | L  |
| Sample Diagnosis (from Pathology Verification):   | Degenerative joint disease   |
| Normal:   | 0%   |
| Lesional:   | 50%  |
| Tumor:  | 0%   |
| Tumor Hypo/Acellular Stroma:                      | 0%   |
| Tumor Hypercellular Stroma:                       | 0%   |
| Necrosis:   | 50%  |
| Pathology Verification notes from H&E review:     | lesion: fibrous tissue with foamy histiocytes and fibrinoid degeneration |
| CASE Diagnosis (from medical center path report): | No pathologic disease  |
| Age:  | 53   |
| Gender:   | Male   |
| Storage:  | Store FFPE tissue sections at +4°C.                                      |



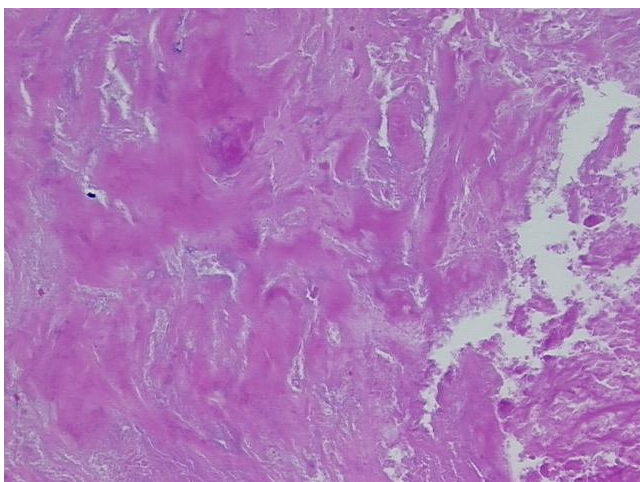
[View online »](#)

Stability: All FFPE tissue sections are stable for 1 year from date of purchase.

**Product images:**



4x Image



20x Image