

## Product datasheet for **CS806447**

### Tissue FFPE Sections, Lung

#### Product data:

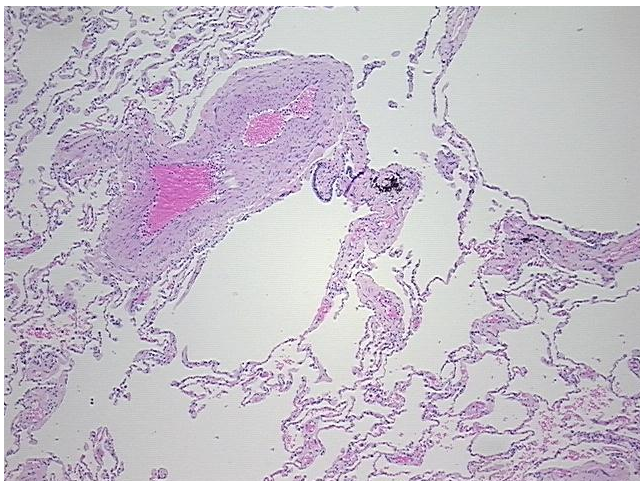
|   |  |
|---|--|
| Product Type:                                     | FFPE Sections  |
| Disease State:                                    | Other Disease  |
| Diagnosis Category:                               | Chronic Obstructive Pulmonary Disease (COPD)         |
| Tissue:   | Lung   |
| Frozen Sample ID:                                 | PA15476AE1   |
| Case ID:  | CU0000005853   |
| Tissue of Origin:                                 | Lung   |
| Site of Finding:                                  | Lung   |
| Appearance:                                       | L  |
| Sample Diagnosis (from Pathology Verification):   | Emphysema, centrilobular                             |
| Normal:   | 0%   |
| Lesional:   | 100%   |
| Tumor:  | 0%   |
| Tumor Hypo/Acellular Stroma:                      | 0%   |
| Tumor Hypercellular Stroma:                       | 0%   |
| Necrosis:   | 0%   |
| Pathology Verification notes from H&E review:     | 70% alveoli, 5% bronchioles, 25% fibrovascular septa |
| CASE Diagnosis (from medical center path report): | Emphysema, centrilobular                             |
| Age:  | 56   |
| Gender:   | Male   |
| Storage:  | Store FFPE tissue sections at +4°C.                  |



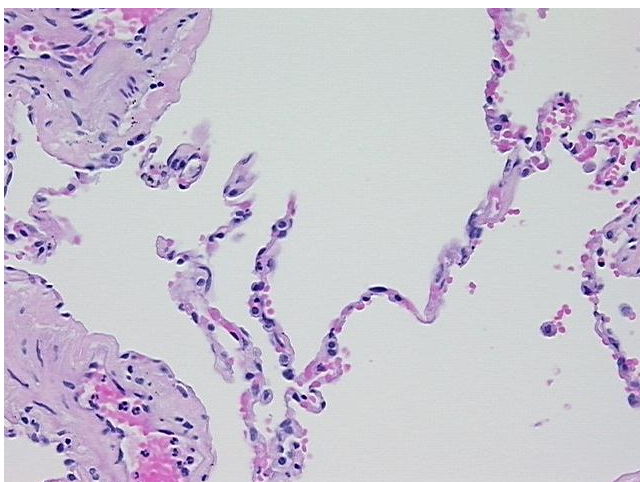
[View online »](#)

Stability: All FFPE tissue sections are stable for 1 year from date of purchase.

**Product images:**



4x Image



20x Image