

Product datasheet for **CS806277**

Tissue FFPE Sections, Breast

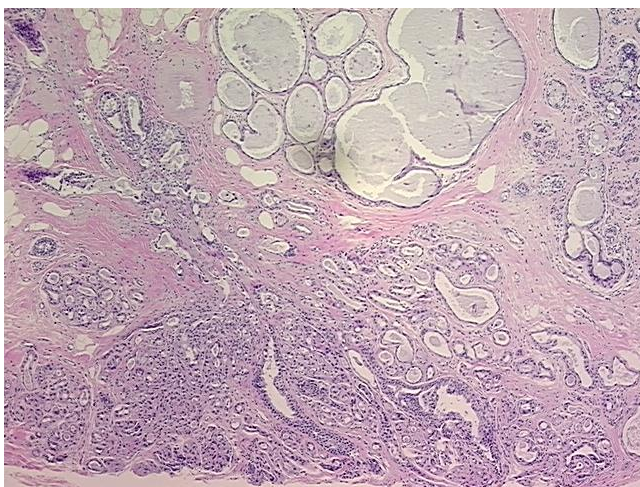
Product data:

Product Type:	FFPE Sections
Disease State:	Cancer
Diagnosis Category:	Breast Cancer
Tissue:	Breast
Frozen Sample ID:	PA0F3346F4
Case ID:	CU0000005807
Tissue of Origin:	Breast
Site of Finding:	Breast
Appearance:	T
Sample Diagnosis (from Pathology Verification):	Adenocarcinoma of breast, ductal
Normal:	50%
Lesional:	40%
Tumor:	5%
Tumor Hypo/Acellular Stroma:	0%
Tumor Hypercellular Stroma:	5%
Necrosis:	0%
Pathology Verification notes from H&E review:	Lesion (40%): Ductal hyperplasia of breast, atypical 10%, Fibrocystic changes to breast 70%, Apocrine metaplasia of breast 10%, Adenosis of breast, sclerosing 10%; Non Tumor Structures: 30% Glandular epithelium, 65% Stroma, 5% Adipose tissue
CASE Diagnosis (from medical center path report):	Adenocarcinoma of breast, ductal
Age:	68
Gender:	Female

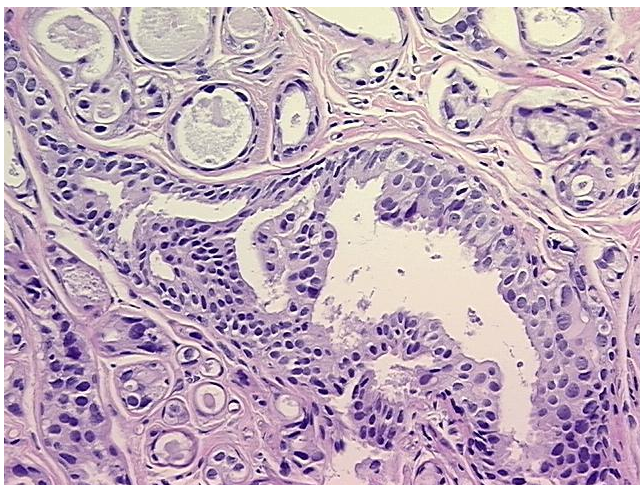


[View online »](#)

Tumor Grade:	NSABP Grade: Nuclear 2 of 3 & Histologic 2 of 3
Minimum Stage Grouping:	IIIA
T (Extent of Primary Tumor):	T2
N (Lymph node metastasis):	N2
M (Distant metastasis):	MX
Storage:	Store FFPE tissue sections at +4°C.
Stability:	All FFPE tissue sections are stable for 1 year from date of purchase.

Product images:

4x Image



20x Image