

## Product datasheet for **CS806271**

### Tissue FFPE Sections, Kidney

#### Product data:

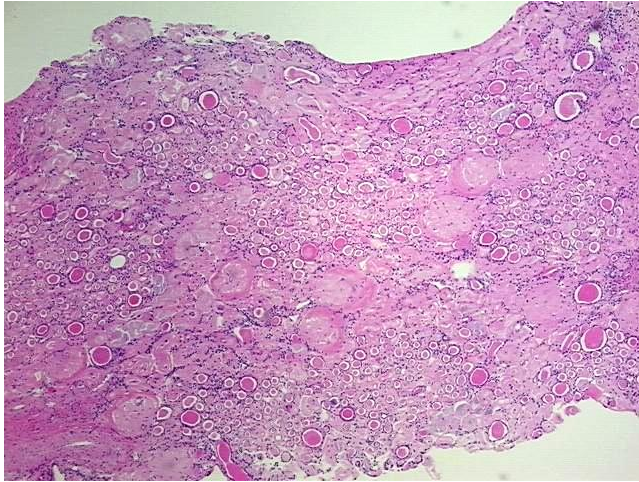
|   |   |
|---|---|
| Product Type:                                     | FFPE Sections                               |
| Disease State:                                    | Other Disease                               |
| Diagnosis Category:                               | Endstage Kidney Disease                     |
| Tissue:   | Kidney                                      |
| Frozen Sample ID:                                 | PA00004E5E                                  |
| Case ID:  | CU0000005806                                |
| Tissue of Origin:                                 | Kidney                                      |
| Site of Finding:                                  | Kidney                                      |
| Appearance:                                       | Lesion                                      |
| Sample Diagnosis (from Pathology Verification):   | Endstage kidney disease                     |
| Normal:   | 0%  |
| Lesional:   | 100%  |
| Tumor:  | 0%  |
| Tumor Hypo/Acellular Stroma:                      | 0%  |
| Tumor Hypercellular Stroma:                       | 0%  |
| Necrosis:   | 0%  |
| Pathology Verification notes from H&E review:     | 80% cortex, 20% medulla                     |
| CASE Diagnosis (from medical center path report): | Carcinoma of kidney, renal cell, clear cell |
| Age:  | 39  |
| Gender:   | Male  |
| Storage:  | Store FFPE tissue sections at +4°C.         |



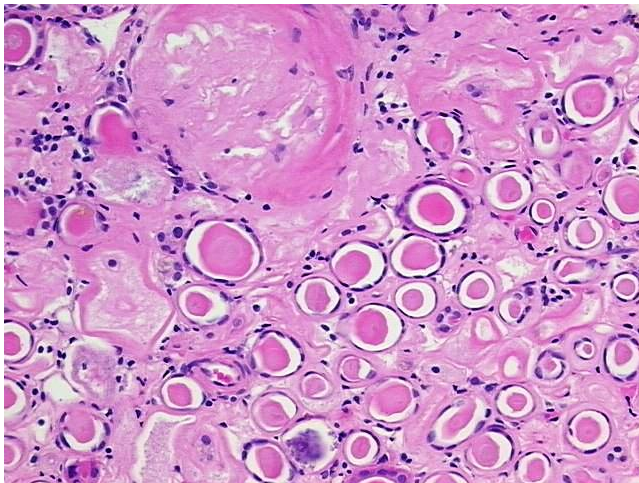
[View online »](#)

Stability: All FFPE tissue sections are stable for 1 year from date of purchase.

**Product images:**



4x Image



20x Image