

Product datasheet for **CS806178**

Tissue FFPE Sections, Colon: sigmoid

Product data:

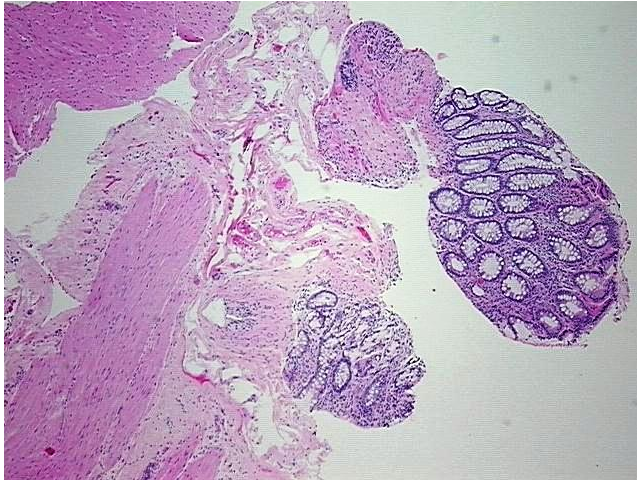
Product Type:	FFPE Sections
Disease State:	Normal
Diagnosis Category:	Normal
Tissue:	Colon
Frozen Sample ID:	PA00004CE2
Case ID:	CU0000005770
Tissue of Origin:	Colon: sigmoid
Site of Finding:	Colon: sigmoid
Appearance:	Normal
Sample Diagnosis (from Pathology Verification):	Within normal limits
Normal:	100%
Lesional:	0%
Tumor:	0%
Tumor Hypo/Acellular Stroma:	0%
Tumor Hypercellular Stroma:	0%
Necrosis:	0%
Pathology Verification notes from H&E review:	2% mucosa, 10% submucosa and serosa, 88% muscle
CASE Diagnosis (from medical center path report):	Adenocarcinoma of colon
Age:	53
Gender:	Female
Storage:	Store FFPE tissue sections at +4°C.



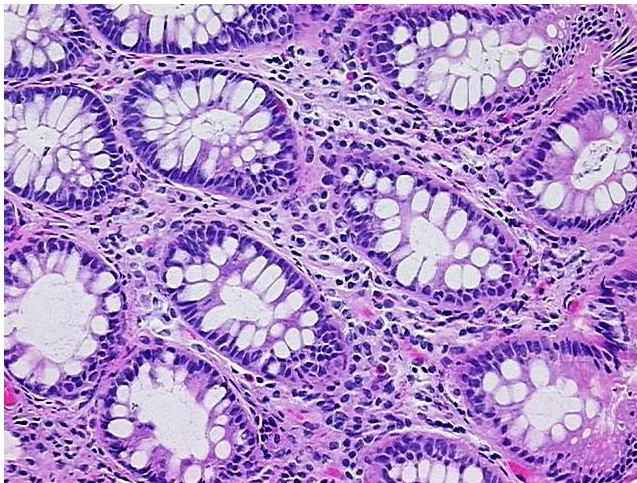
[View online »](#)

Stability: All FFPE tissue sections are stable for 1 year from date of purchase.

Product images:



4x Image



20x Image