

Product datasheet for **CS806070**

Tissue FFPE Sections, Colon: left

Product data:

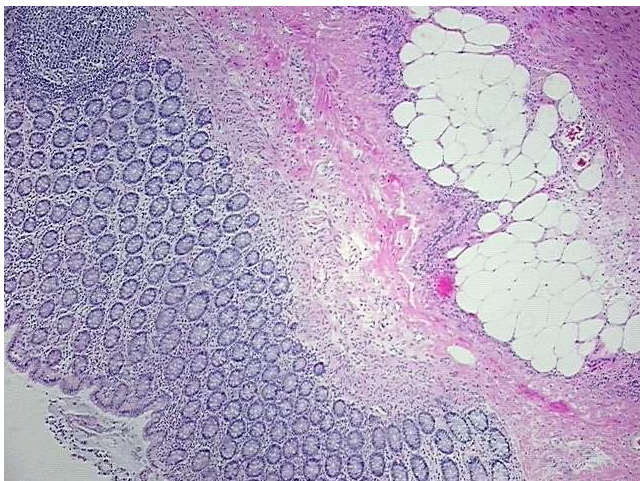
Product Type:	FFPE Sections
Disease State:	Normal
Diagnosis Category:	Normal
Tissue:	Colon
Frozen Sample ID:	PA000045C5
Case ID:	CU0000005732
Tissue of Origin:	Colon: left
Site of Finding:	Colon: left
Appearance:	Normal
Sample Diagnosis (from Pathology Verification):	Within normal limits
Normal:	100%
Lesional:	0%
Tumor:	0%
Tumor Hypo/Acellular Stroma:	0%
Tumor Hypercellular Stroma:	0%
Necrosis:	0%
Pathology Verification notes from H&E review:	15% mucosa, 25% submucosa, 60% muscle; lymphoid follicles in submucosa
CASE Diagnosis (from medical center path report):	Adenocarcinoma of colon
Age:	74
Gender:	Female
Storage:	Store FFPE tissue sections at +4°C.



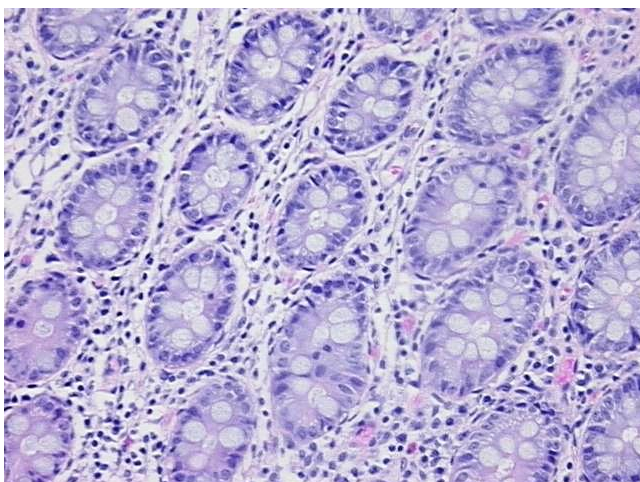
[View online »](#)

Stability: All FFPE tissue sections are stable for 1 year from date of purchase.

Product images:



4x Image



20x Image