

Product datasheet for **CS806054**

Tissue FFPE Sections, Lung

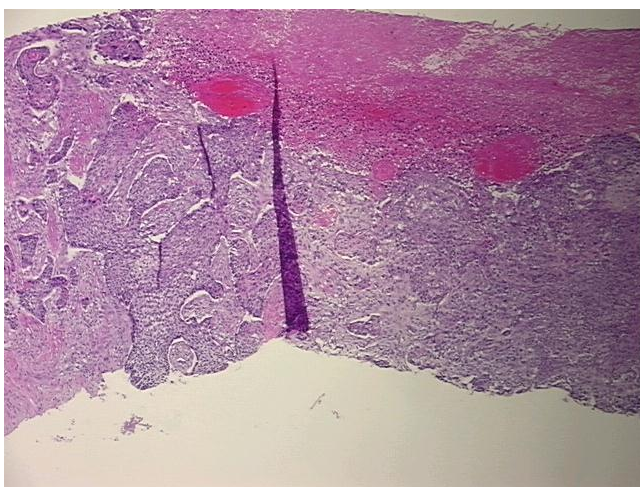
Product data:

| | |
|---|---|
| Product Type: | FFPE Sections |
| Disease State: | Cancer |
| Diagnosis Category: | Lung Cancer |
| Tissue: | Lung |
| Frozen Sample ID: | PA000045B0 |
| Case ID: | CU0000005728 |
| Tissue of Origin: | Lung |
| Site of Finding: | Lung |
| Appearance: | T |
| Sample Diagnosis (from Pathology Verification): | Carcinoma of lung, squamous cell |
| Normal: | 25% |
| Lesional: | 0% |
| Tumor: | 45% |
| Tumor Hypo/Acellular Stroma: | 10% |
| Tumor Hypercellular Stroma: | 20% |
| Necrosis: | 0% |
| Pathology Verification notes from H&E review: | Tumor Stroma (Cellular): Desmoplastic reaction; Inflammation: Moderate Lymphoplasmacytic infiltrate |
| CASE Diagnosis (from medical center path report): | Carcinoma of lung, squamous cell |
| Age: | 54 |
| Gender: | Male |
| Tumor Grade: | AJCC G2: Moderately differentiated |

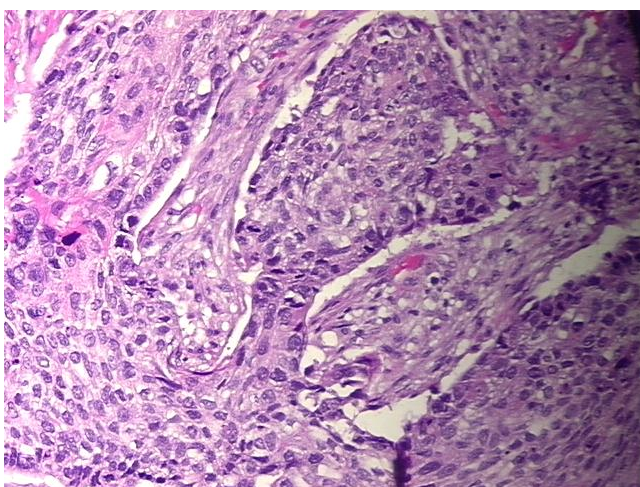


[View online »](#)

| | |
|------------------------------|---|
| Minimum Stage Grouping: | IIB |
| T (Extent of Primary Tumor): | T2 |
| N (Lymph node metastasis): | N1 |
| M (Distant metastasis): | MX |
| Diagnostic Test Results: | HER2 ~ ERBB2 ~ Neu ! by IHC,Negative |
| Storage: | Store FFPE tissue sections at +4°C. |
| Stability: | All FFPE tissue sections are stable for 1 year from date of purchase. |

Product images:

4x Image



20x Image