

Product datasheet for **CS806028**

Tissue FFPE Sections, Cervix

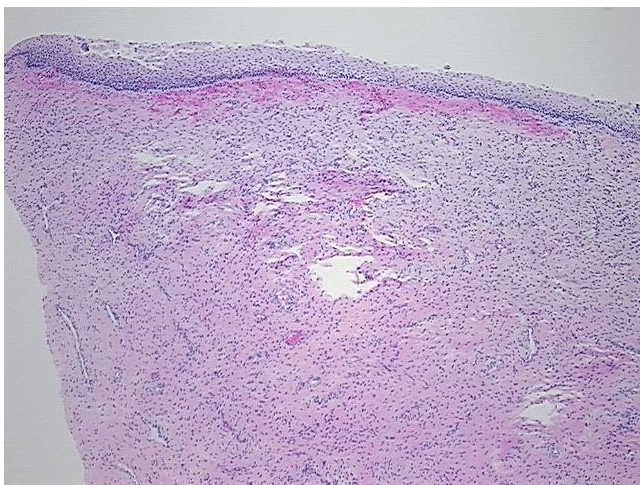
Product data:

Product Type:	FFPE Sections
Disease State:	Normal
Diagnosis Category:	Normal
Tissue:	Cervix
Frozen Sample ID:	PA00004573
Case ID:	CU0000005720
Tissue of Origin:	Cervix
Site of Finding:	Cervix
Appearance:	R
Sample Diagnosis (from Pathology Verification):	Within normal limits
Normal:	100%
Lesional:	0%
Tumor:	0%
Tumor Hypo/Acellular Stroma:	0%
Tumor Hypercellular Stroma:	0%
Necrosis:	0%
Pathology Verification notes from H&E review:	5% glandular epithelium, 5% squamous epithelium, 90% fibromuscular stroma, transformation zone (+)
CASE Diagnosis (from medical center path report):	Adenocarcinoma of endometrium, serous
Age:	79
Gender:	Female
Tumor Grade:	FIGO G3: Poorly differentiated

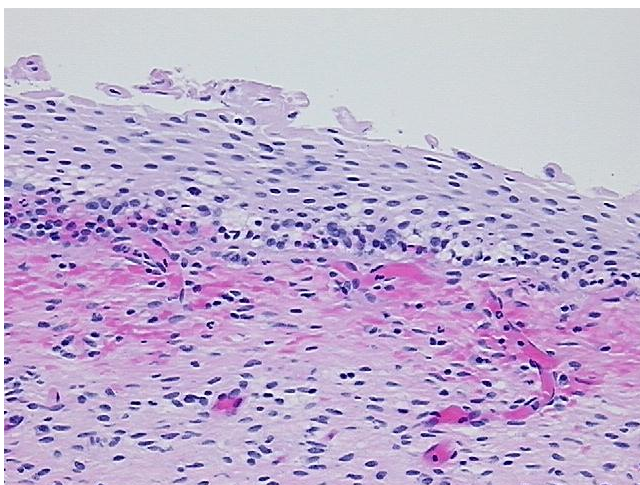


[View online »](#)

Minimum Stage Grouping:	IB
T (Extent of Primary Tumor):	T1b
N (Lymph node metastasis):	N0
M (Distant metastasis):	MX
Storage:	Store FFPE tissue sections at +4°C.
Stability:	All FFPE tissue sections are stable for 1 year from date of purchase.

Product images:

4x Image



20x Image