

Product datasheet for **CS805929**

Tissue FFPE Sections, Kidney

Product data:

| | |
|---|---|
| Product Type: | FFPE Sections |
| Disease State: | Cancer |
| Diagnosis Category: | Renal Cell Carcinoma |
| Tissue: | Kidney |
| Frozen Sample ID: | PA154788EA |
| Case ID: | CU0000005701 |
| Tissue of Origin: | Kidney |
| Site of Finding: | Chest wall |
| Appearance: | T |
| Sample Diagnosis (from Pathology Verification): | Carcinoma of kidney, renal cell, clear cell, metastatic |
| Normal: | 20% |
| Lesional: | 0% |
| Tumor: | 80% |
| Tumor Hypo/Acellular Stroma: | 0% |
| Tumor Hypercellular Stroma: | 0% |
| Necrosis: | 0% |
| CASE Diagnosis (from medical center path report): | Carcinoma of kidney, renal cell, clear cell, metastatic |
| Age: | 55 |
| Gender: | Male |
| Tumor Grade: | Fuhrman G3: Nuclei very irregular |
| Minimum Stage Grouping: | IV |



[View online »](#)

T (Extent of Primary Tumor): TX

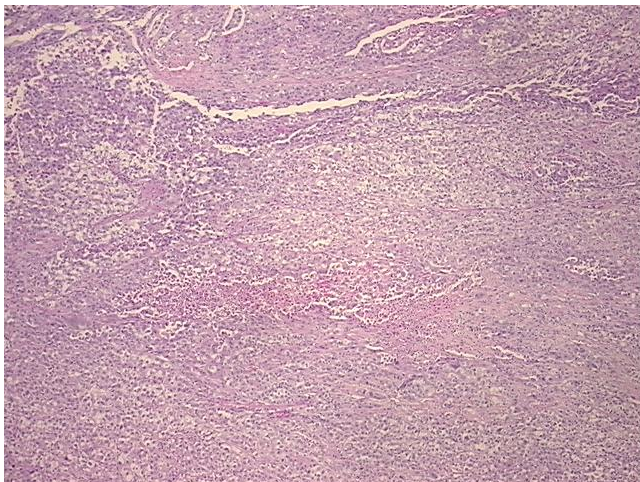
N (Lymph node metastasis): NX

M (Distant metastasis): M1

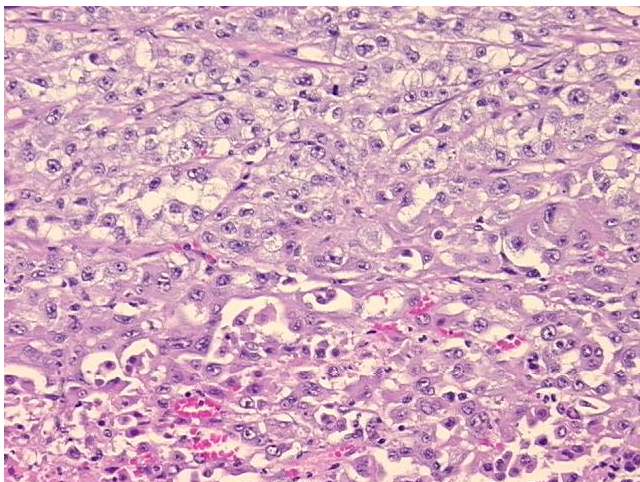
Storage: Store FFPE tissue sections at +4°C.

Stability: All FFPE tissue sections are stable for 1 year from date of purchase.

Product images:



4x Image



20x Image