

## Product datasheet for **CS805875**

### Tissue FFPE Sections, Soft tissue

#### Product data:

Product Type:	FFPE Sections
Disease State:	Cancer
Diagnosis Category:	Sarcoma
Tissue:	Soft tissue
Frozen Sample ID:	PA154769E9
Case ID:	CU0000005693
Tissue of Origin:	Soft tissue
Site of Finding:	Neck
Appearance:	T
Sample Diagnosis (from Pathology Verification):	Fibrosarcoma
Normal:	8%
Lesional:	0%
Tumor:	70%
Tumor Hypo/Acellular Stroma:	0%
Tumor Hypercellular Stroma:	20%
Necrosis:	2%
CASE Diagnosis (from medical center path report):	Fibrosarcoma
Age:	72
Gender:	Female
Tumor Grade:	Other Histologic Grade
Minimum Stage Grouping:	II



[View online »](#)

T (Extent of Primary Tumor): T2

N (Lymph node metastasis): N0

M (Distant metastasis): MX

Diagnostic Test Results: S100 protein, Negative; Cytokeratin CAM5.2 ~ CAM5.2 ! by IHC, Negative; CD34 ~ HPCA ! by IHC, Negative; Cytokeratin AE1/AE3 ~ AE1/AE3 ! by IHC, Negative; MSA ~ Muscle Specific Actin, Positive, focal; CD117 ~ C-kit ~ SCFR ! by IHC, Negative

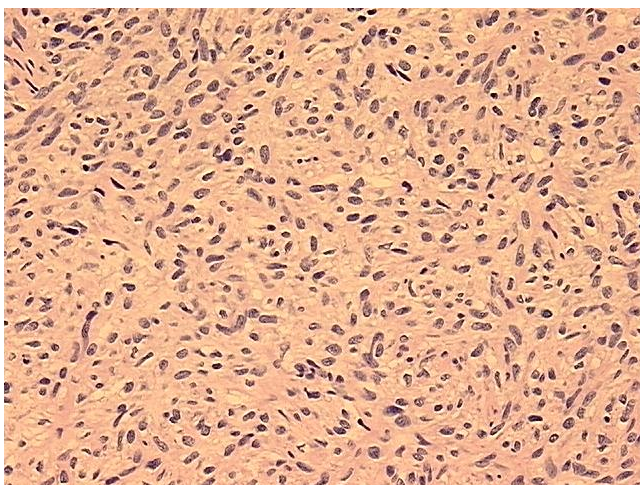
Storage: Store FFPE tissue sections at +4°C.

Stability: All FFPE tissue sections are stable for 1 year from date of purchase.

### Product images:



4x Image



20x Image