

## Product datasheet for **CS805694**

### Tissue FFPE Sections, Colon: right

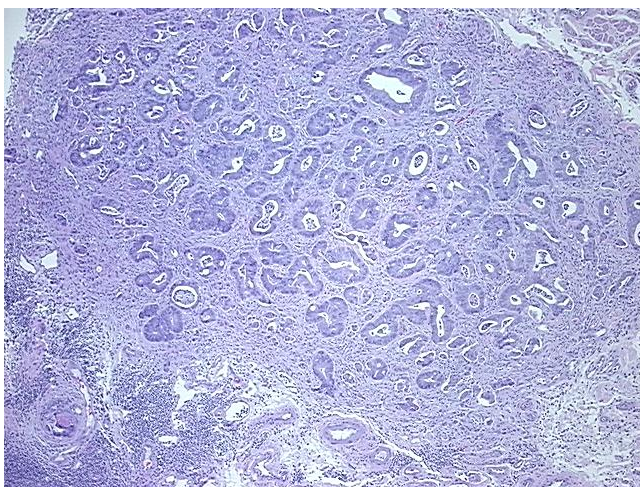
#### Product data:

Product Type:	FFPE Sections
Disease State:	Cancer
Diagnosis Category:	Colorectal Cancer
Tissue:	Colon
Frozen Sample ID:	PA0000424B
Case ID:	CU0000005634
Tissue of Origin:	Colon: right
Site of Finding:	Colon: right
Appearance:	T
Sample Diagnosis (from Pathology Verification):	Adenocarcinoma of colon
Normal:	85%
Lesional:	0%
Tumor:	10%
Tumor Hypo/Acellular Stroma:	0%
Tumor Hypercellular Stroma:	5%
Necrosis:	0%
Pathology Verification notes from H&E review:	Tumor Stroma (Cellular): Desmoplastic reaction; Inflammation: Moderate Lymphoid infiltrate; Non Tumor Structures: 10% Mucosa, 65% Muscle, 20% Submucosa, 5% Serosa; Other Features/Comments: Tumor area: 2 mm x 2 mm
CASE Diagnosis (from medical center path report):	Adenocarcinoma of colon
Age:	61
Gender:	Female

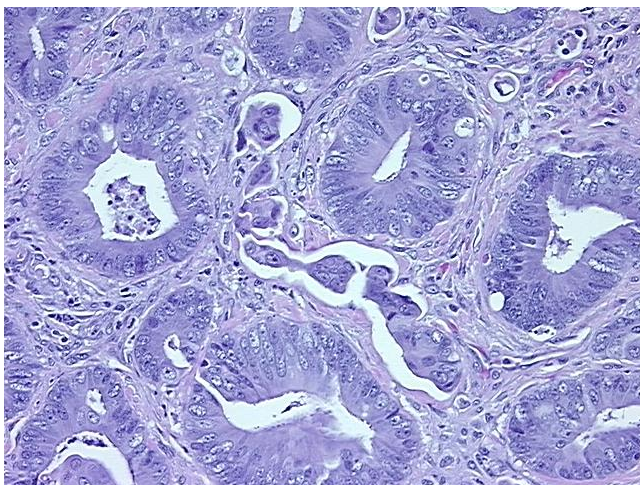


[View online »](#)

Tumor Grade:	AJCC G1: Well differentiated
Minimum Stage Grouping:	III
T (Extent of Primary Tumor):	T4
N (Lymph node metastasis):	N1
M (Distant metastasis):	MX
Storage:	Store FFPE tissue sections at +4°C.
Stability:	All FFPE tissue sections are stable for 1 year from date of purchase.

**Product images:**

4x Image



20x Image