

## Product datasheet for **CS805652**

### Tissue FFPE Sections, Breast

#### Product data:

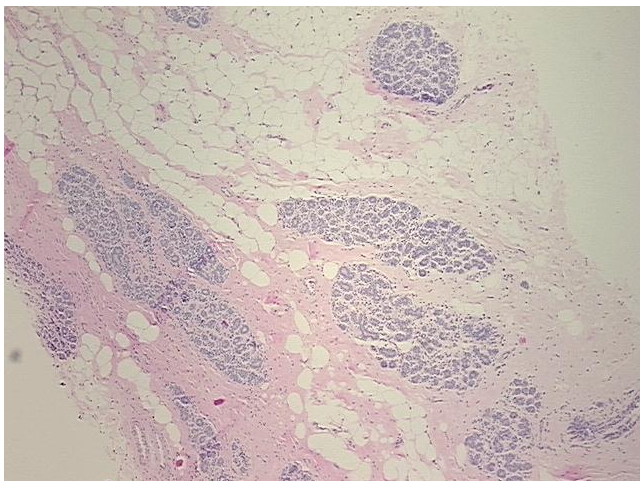
|   |  |
|---|--|
| Product Type:                                     | FFPE Sections  |
| Disease State:                                    | Normal   |
| Diagnosis Category:                               | Normal   |
| Tissue:   | Breast   |
| Frozen Sample ID:                                 | PA000041F0   |
| Case ID:  | CU0000005622   |
| Tissue of Origin:                                 | Breast   |
| Site of Finding:                                  | Breast   |
| Appearance:                                       | R  |
| Sample Diagnosis (from Pathology Verification):   | Within normal limits                                     |
| Normal:   | 100%   |
| Lesional:   | 0%   |
| Tumor:  | 0%   |
| Tumor Hypo/Acellular Stroma:                      | 0%   |
| Tumor Hypercellular Stroma:                       | 0%   |
| Necrosis:   | 0%   |
| Pathology Verification notes from H&E review:     | 40% glandular epithelium, 30% stroma, 30% adipose tissue |
| CASE Diagnosis (from medical center path report): | Fibrocystic changes to breast                            |
| Age:  | 36   |
| Gender:   | Not specified  |
| Storage:  | Store FFPE tissue sections at +4°C.                      |



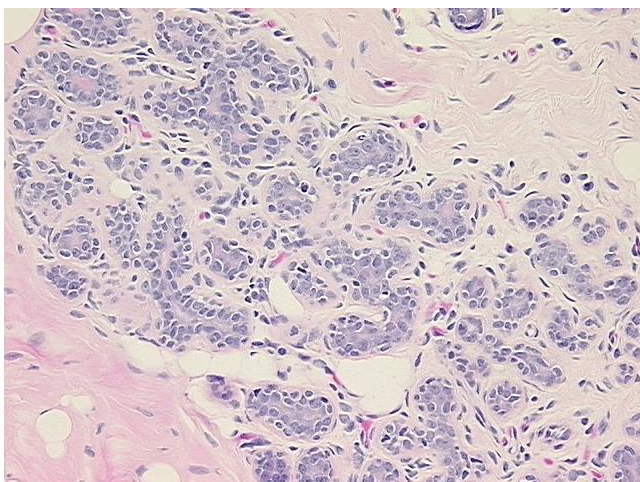
[View online »](#)

Stability: All FFPE tissue sections are stable for 1 year from date of purchase.

**Product images:**



4x Image



20x Image