

Product datasheet for **CS805618**

Tissue FFPE Sections, Endometriotic tissue

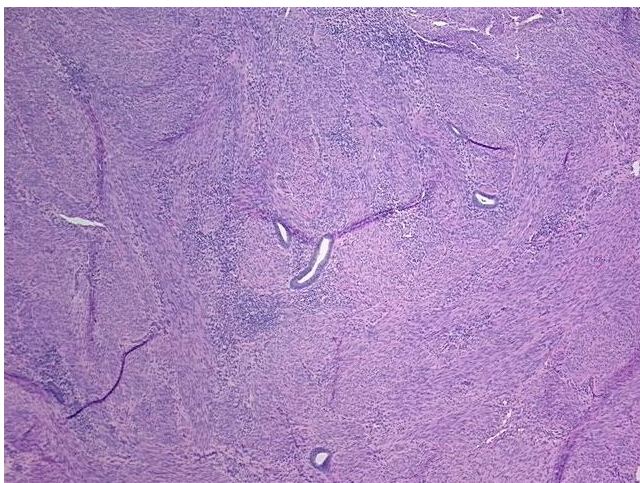
Product data:

Product Type:	FFPE Sections
Disease State:	Other Disease
Diagnosis Category:	Adenosis
Tissue:	Myometrium
Frozen Sample ID:	PA000041D4
Case ID:	CU0000005614
Tissue of Origin:	Endometriotic tissue
Site of Finding:	Uterus
Appearance:	R
Sample Diagnosis (from Pathology Verification):	Adenomyosis of myometrium
Normal:	100%
Lesional:	0%
Tumor:	0%
Tumor Hypo/Acellular Stroma:	0%
Tumor Hypercellular Stroma:	0%
Necrosis:	0%
Pathology Verification notes from H&E review:	2% endometrium, 98% myometrium; Mild adenomyosis is present
CASE Diagnosis (from medical center path report):	Adenocarcinoma of endometrium, endometrioid, squamous features, focal
Age:	63
Gender:	Female
Tumor Grade:	FIGO G2: Moderately differentiated

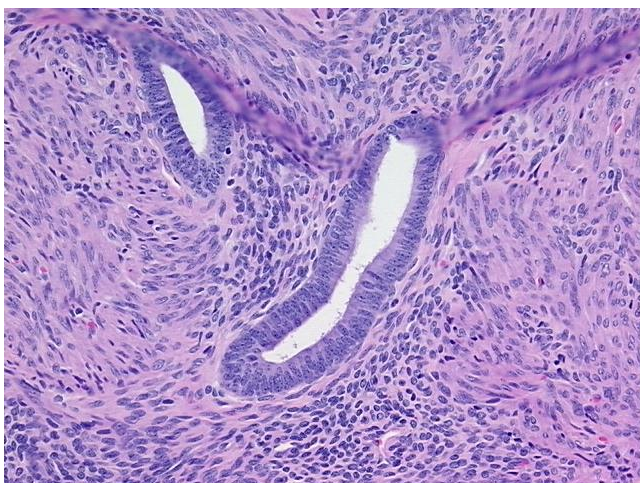


[View online »](#)

Minimum Stage Grouping:	IB
T (Extent of Primary Tumor):	T1b
N (Lymph node metastasis):	N0
M (Distant metastasis):	MX
Storage:	Store FFPE tissue sections at +4°C.
Stability:	All FFPE tissue sections are stable for 1 year from date of purchase.

Product images:

4x Image



20x Image