

## Product datasheet for **CS805484**

### Tissue FFPE Sections, Cervix

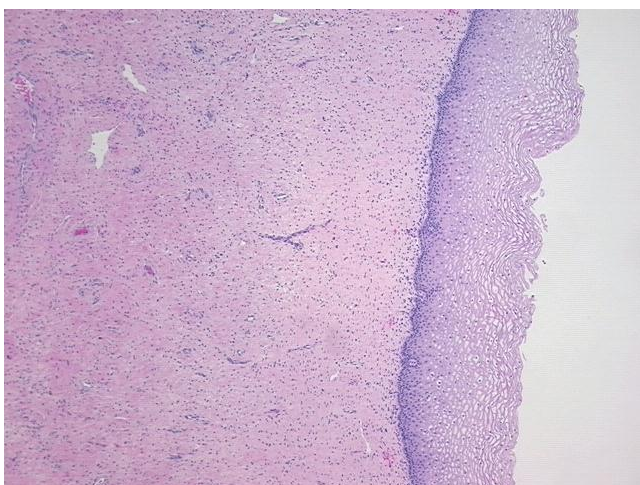
#### Product data:

Product Type:	FFPE Sections
Disease State:	Normal
Diagnosis Category:	Normal
Tissue:	Cervix
Frozen Sample ID:	PA00004493
Case ID:	CU0000005535
Tissue of Origin:	Cervix
Site of Finding:	Cervix
Appearance:	R
Sample Diagnosis (from Pathology Verification):	Within normal limits
Normal:	100%
Lesional:	0%
Tumor:	0%
Tumor Hypo/Acellular Stroma:	0%
Tumor Hypercellular Stroma:	0%
Necrosis:	0%
Pathology Verification notes from H&E review:	10% squamous epithelium, 90% fibromuscular stroma, no transformation zone
CASE Diagnosis (from medical center path report):	Leiomyoma of myometrium
Age:	55
Gender:	Female
Tumor Grade:	Not Reported

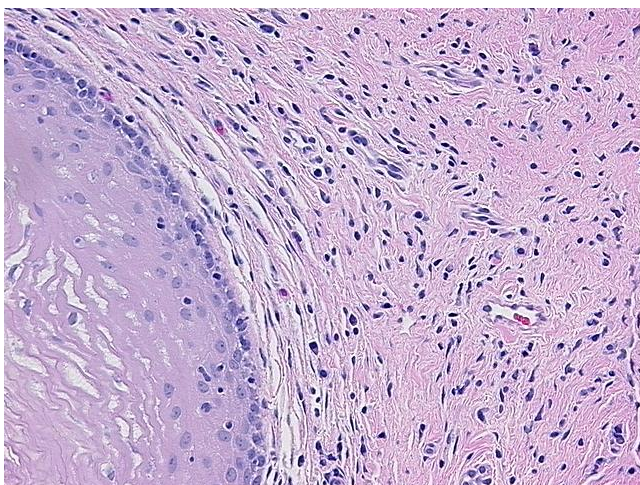


[View online »](#)

Minimum Stage Grouping:	Not Reported
T (Extent of Primary Tumor):	Not Reported
N (Lymph node metastasis):	Not Reported
M (Distant metastasis):	Not Reported
Storage:	Store FFPE tissue sections at +4°C.
Stability:	All FFPE tissue sections are stable for 1 year from date of purchase.

**Product images:**

4x Image



20x Image