

Product datasheet for CS805413

Tissue FFPE Sections, Small intestine

Product data:

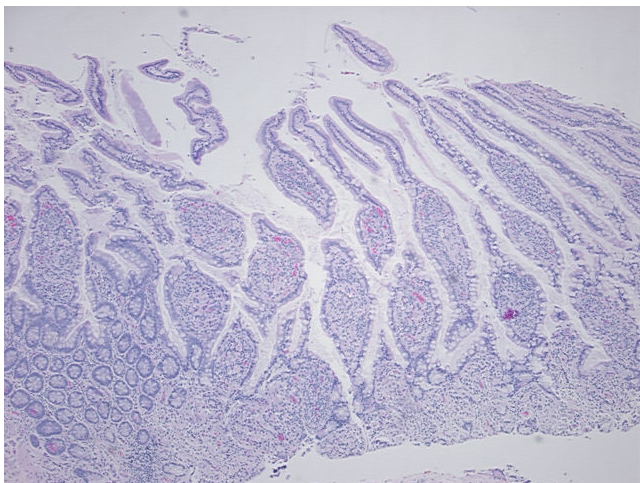
Product Type:	FFPE Sections
Disease State:	Normal
Diagnosis Category:	Normal
Tissue:	Small intestine
Frozen Sample ID:	PA000043A6
Case ID:	CU0000005497
Tissue of Origin:	Small intestine
Site of Finding:	Small intestine
Appearance:	R
Sample Diagnosis (from Pathology Verification):	Within normal limits
Normal:	100%
Lesional:	0%
Tumor:	0%
Tumor Hypo/Acellular Stroma:	0%
Tumor Hypercellular Stroma:	0%
Necrosis:	0%
Pathology Verification notes from H&E review:	50% mucosa, 10% submucosa, 40% muscle
CASE Diagnosis (from medical center path report):	Crohns disease
Age:	48
Gender:	Male
Storage:	Store FFPE tissue sections at +4°C.



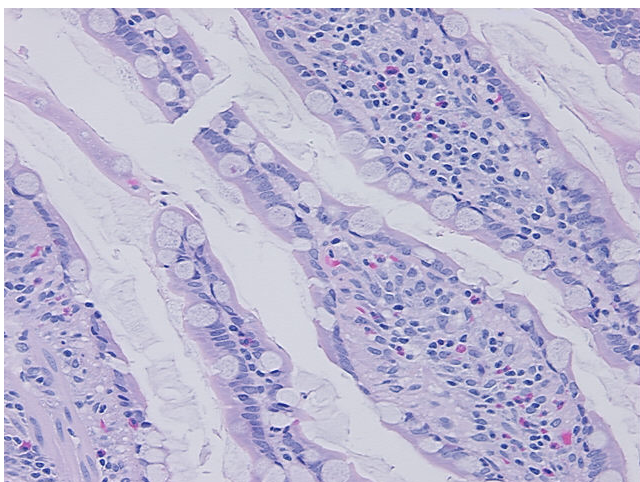
[View online »](#)

Stability: All FFPE tissue sections are stable for 1 year from date of purchase.

Product images:



4x Image



20x Image