

Product datasheet for **CS805289**

Tissue FFPE Sections, Breast

Product data:

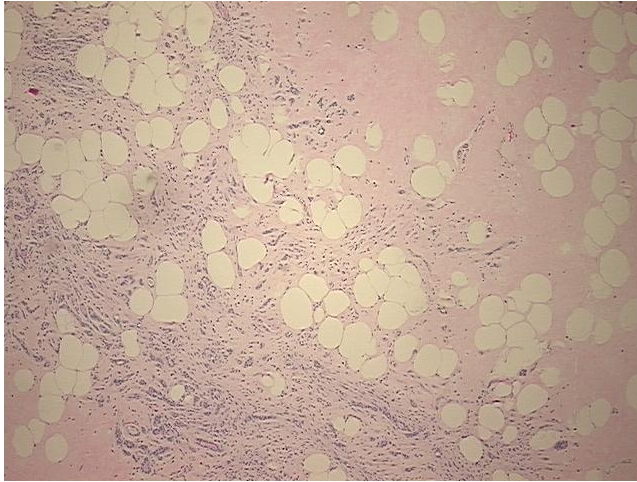
Product Type:	FFPE Sections
Disease State:	Other Disease
Diagnosis Category:	Adenosis
Tissue:	Breast
Frozen Sample ID:	PA0F333B27
Case ID:	CU0000005426
Tissue of Origin:	Breast
Site of Finding:	Breast
Appearance:	L
Sample Diagnosis (from Pathology Verification):	Adenosis of breast, sclerosing
Normal:	90%
Lesional:	10%
Tumor:	0%
Tumor Hypo/Acellular Stroma:	0%
Tumor Hypercellular Stroma:	0%
Necrosis:	0%
Pathology Verification notes from H&E review:	Non Tumor Structures: 5% Glandular epithelium, 50% Stroma, 45% Adipose tissue
CASE Diagnosis (from medical center path report):	Ductal hyperplasia of breast
Age:	50
Gender:	Female
Storage:	Store FFPE tissue sections at +4°C.



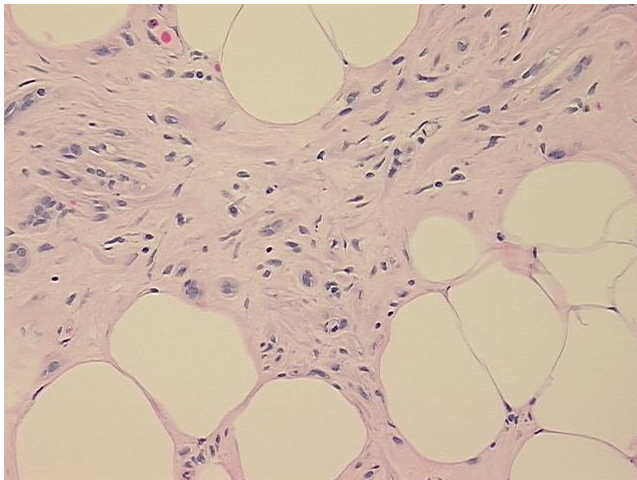
[View online »](#)

Stability: All FFPE tissue sections are stable for 1 year from date of purchase.

Product images:



4x Image



20x Image