

Product datasheet for **CS805272**

Tissue FFPE Sections, Colon: sigmoid

Product data:

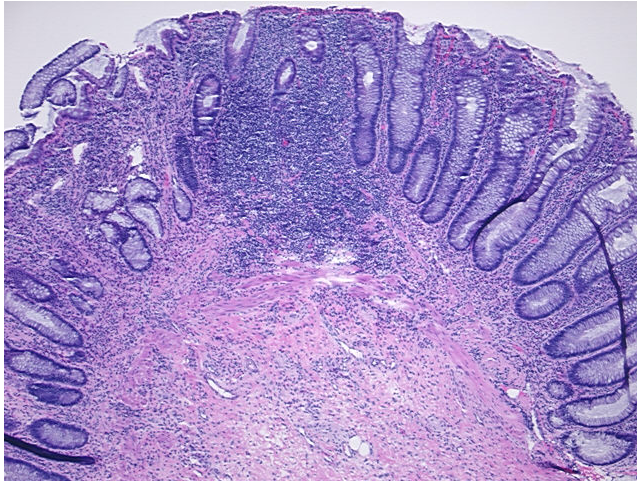
Product Type:	FFPE Sections
Disease State:	Other Disease
Diagnosis Category:	Inflammatory Bowel Disease (IBD)
Tissue:	Colon
Frozen Sample ID:	PA10FCFD70
Case ID:	CU0000005420
Tissue of Origin:	Colon: sigmoid
Site of Finding:	Colon: sigmoid
Appearance:	L
Sample Diagnosis (from Pathology Verification):	Colitis, chronic inactive
Normal:	0%
Lesional:	100%
Tumor:	0%
Tumor Hypo/Acellular Stroma:	0%
Tumor Hypercellular Stroma:	0%
Necrosis:	0%
Pathology Verification notes from H&E review:	Chronic inactive colitis (consistent with Crohn's disease); 30% mucosa, 40% submucosa, 30% muscle
CASE Diagnosis (from medical center path report):	Crohns disease
Age:	19
Gender:	Female
Storage:	Store FFPE tissue sections at +4°C.



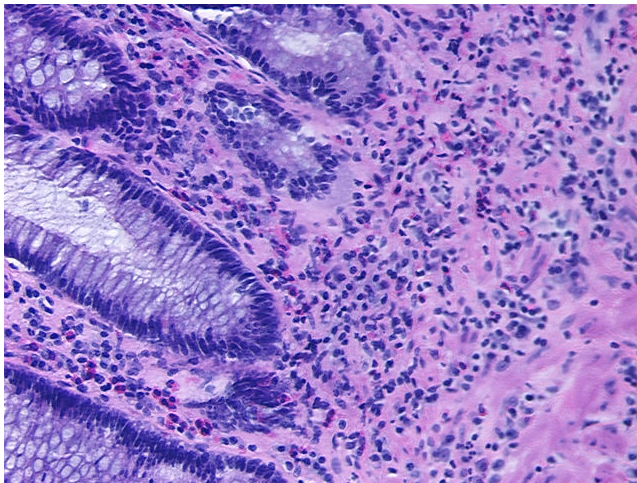
[View online »](#)

Stability: All FFPE tissue sections are stable for 1 year from date of purchase.

Product images:



4x Image



20x Image