

## Product datasheet for CS805268

### Tissue FFPE Sections, Cecum

#### Product data:

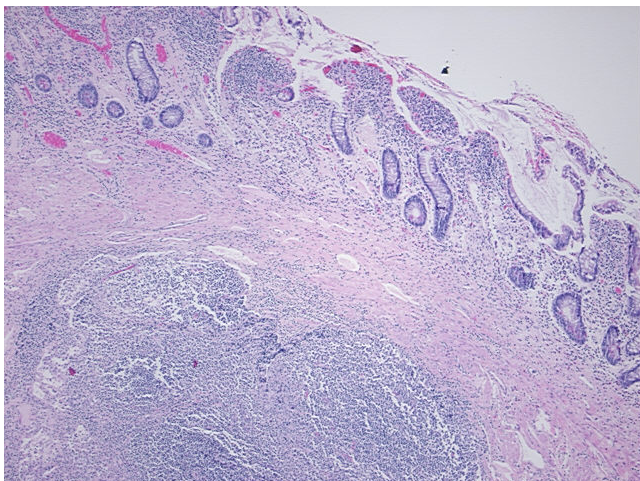
Product Type:	FFPE Sections
Disease State:	Other Disease
Diagnosis Category:	Inflammatory Bowel Disease (IBD)
Tissue:	Colon
Frozen Sample ID:	PA15476720
Case ID:	CU0000005420
Tissue of Origin:	Cecum
Site of Finding:	Cecum
Appearance:	L
Sample Diagnosis (from Pathology Verification):	Crohns disease
Normal:	0%
Lesional:	100%
Tumor:	0%
Tumor Hypo/Acellular Stroma:	0%
Tumor Hypercellular Stroma:	0%
Necrosis:	0%
Pathology Verification notes from H&E review:	10% mucosa, 55% submucosa, 35% muscle; large reactive lymphoid follicles in submucosa
CASE Diagnosis (from medical center path report):	Crohns disease
Age:	19
Gender:	Female
Storage:	Store FFPE tissue sections at +4°C.



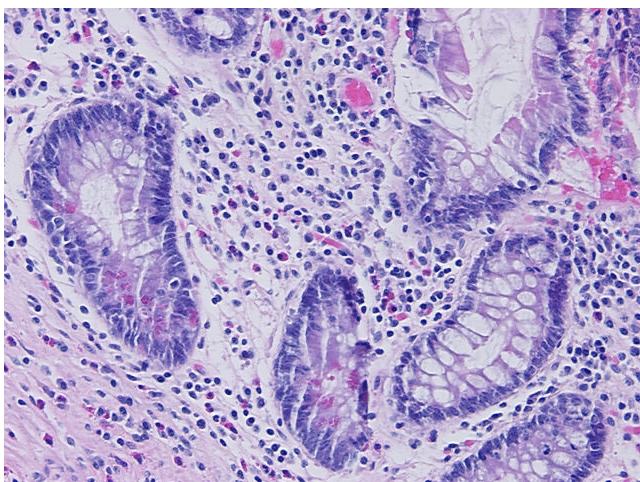
[View online »](#)

Stability: All FFPE tissue sections are stable for 1 year from date of purchase.

**Product images:**



4x Image



20x Image