

Product datasheet for **CS805203**

Tissue FFPE Sections, Small intestine

Product data:

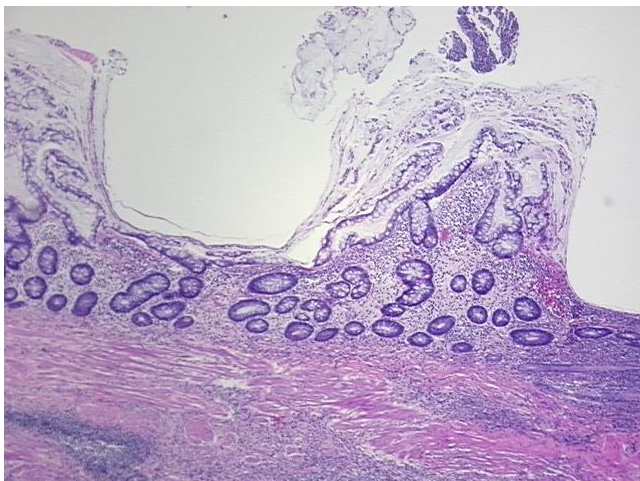
Product Type:	FFPE Sections
Disease State:	Other Disease
Diagnosis Category:	Inflammation (various)
Tissue:	Small intestine
Frozen Sample ID:	PA000067C0
Case ID:	CU0000005400
Tissue of Origin:	Small intestine
Site of Finding:	Small intestine
Appearance:	L
Sample Diagnosis (from Pathology Verification):	Enteritis, chronic active
Normal:	0%
Lesional:	100%
Tumor:	0%
Tumor Hypo/Acellular Stroma:	0%
Tumor Hypercellular Stroma:	0%
Necrosis:	0%
Pathology Verification notes from H&E review:	chronic active enteritis with mucosal ulceration: 20% mucosa, 35% submucosa, 45% muscle; no granuloma present
CASE Diagnosis (from medical center path report):	Crohns disease
Age:	39
Gender:	Female
Storage:	Store FFPE tissue sections at +4°C.



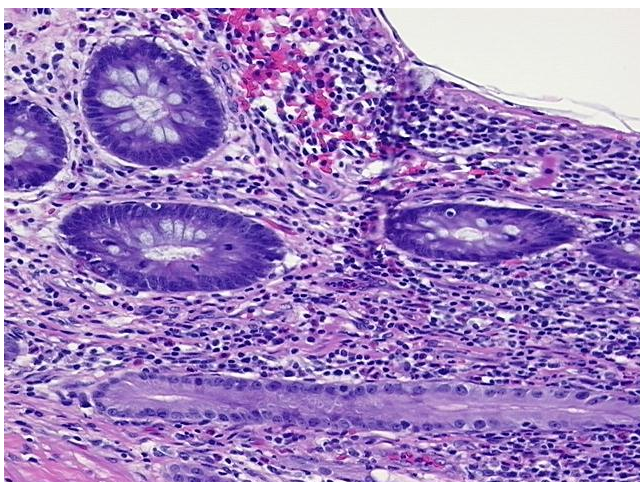
[View online »](#)

Stability: All FFPE tissue sections are stable for 1 year from date of purchase.

Product images:



4x Image



20x Image