

## Product datasheet for **CS805197**

### Tissue FFPE Sections, Duodenum

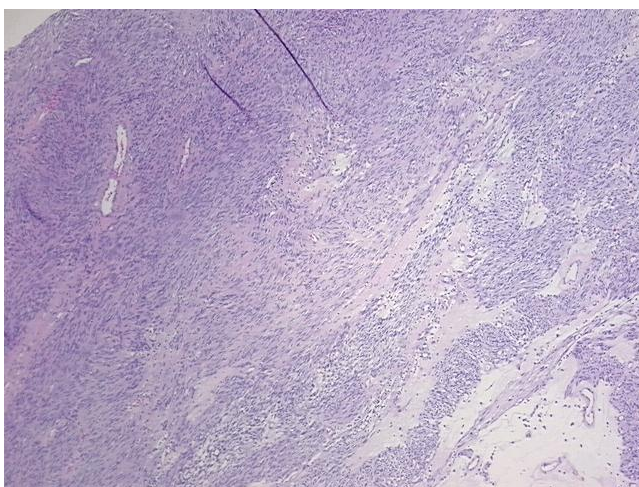
#### Product data:

Product Type:	FFPE Sections
Disease State:	Other Disease
Diagnosis Category:	Gastrointestinal Stromal Tumor (GIST)
Tissue:	Small intestine
Frozen Sample ID:	PA15477D09
Case ID:	CU0000005398
Tissue of Origin:	Duodenum
Site of Finding:	Duodenum
Appearance:	T
Sample Diagnosis (from Pathology Verification):	Gastrointestinal stromal tumor of small intestine
Normal:	0%
Lesional:	0%
Tumor:	94%
Tumor Hypo/Acellular Stroma:	5%
Tumor Hypercellular Stroma:	1%
Necrosis:	0%
Pathology Verification notes from H&E review:	Tumor Stroma (Hypo/Acellular): Myxoid
CASE Diagnosis (from medical center path report):	Gastrointestinal stromal tumor of small intestine
Age:	38
Gender:	Male
Tumor Grade:	Not Reported

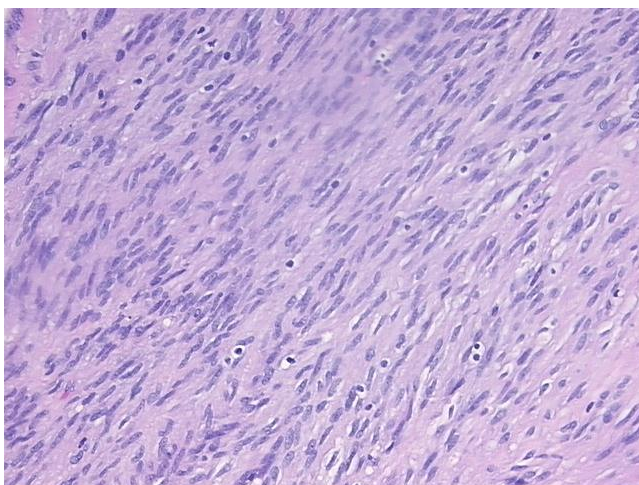


[View online »](#)

Minimum Stage Grouping:	Not Reported
T (Extent of Primary Tumor):	See Other Pathology Notes
N (Lymph node metastasis):	Not Reported
M (Distant metastasis):	Not Reported
Diagnostic Test Results:	MSA ~ Muscle Specific Actin, Positive, weak; CD117 ~ C-kit ~ SCFR ! by IHC, Positive
Storage:	Store FFPE tissue sections at +4°C.
Stability:	All FFPE tissue sections are stable for 1 year from date of purchase.

**Product images:**

4x Image



20x Image