

Product datasheet for **CS805098**

Tissue FFPE Sections, Skin

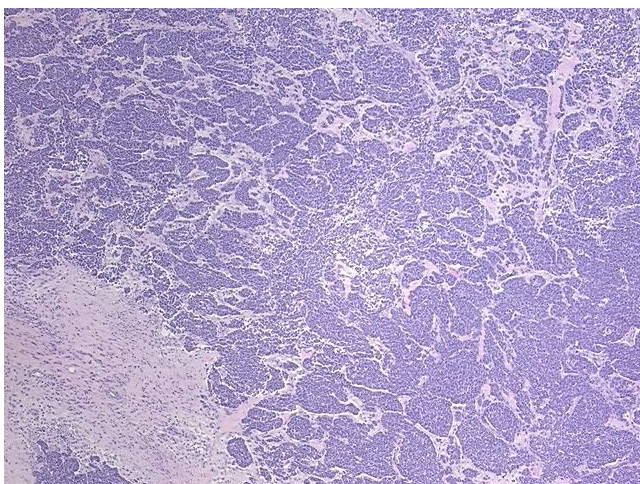
Product data:

Product Type:	FFPE Sections
Disease State:	Cancer
Diagnosis Category:	Skin Cancer
Tissue:	Skin
Frozen Sample ID:	PA15477D1F
Case ID:	CU0000005355
Tissue of Origin:	Skin
Site of Finding:	Skin
Appearance:	T
Sample Diagnosis (from Pathology Verification):	Carcinoma of skin, Merkel cell
Normal:	0%
Lesional:	0%
Tumor:	70%
Tumor Hypo/Acellular Stroma:	10%
Tumor Hypercellular Stroma:	15%
Necrosis:	5%
Pathology Verification notes from H&E review:	Tumor Stroma (Cellular): Desmoplastic reaction, Inflammatory cells; Tumor Stroma (Hypo/Acellular): Fibrosis; Inflammation: Moderate Lymphoplasmacytic infiltrate
CASE Diagnosis (from medical center path report):	Carcinoma of skin, Merkel cell
Age:	26
Gender:	Female
Tumor Grade:	AJCC GX: Grade cannot be assessed

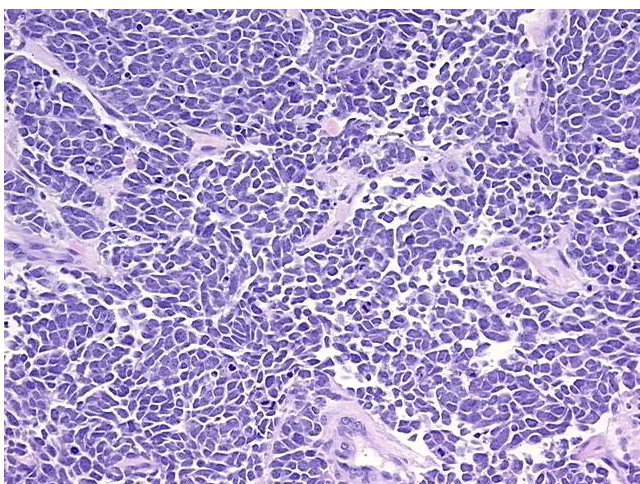


[View online »](#)

Minimum Stage Grouping:	II
T (Extent of Primary Tumor):	T2
N (Lymph node metastasis):	N0 (i-)
M (Distant metastasis):	MX
Diagnostic Test Results:	Neuron specific enolase ~ NSE ! by IHC,Negative; Cytokeratin AE1/AE3 ~ AE1/AE3 ! by IHC,Negative
Storage:	Store FFPE tissue sections at +4°C.
Stability:	All FFPE tissue sections are stable for 1 year from date of purchase.

Product images:

4x Image



20x Image