

## Product datasheet for **CS804882**

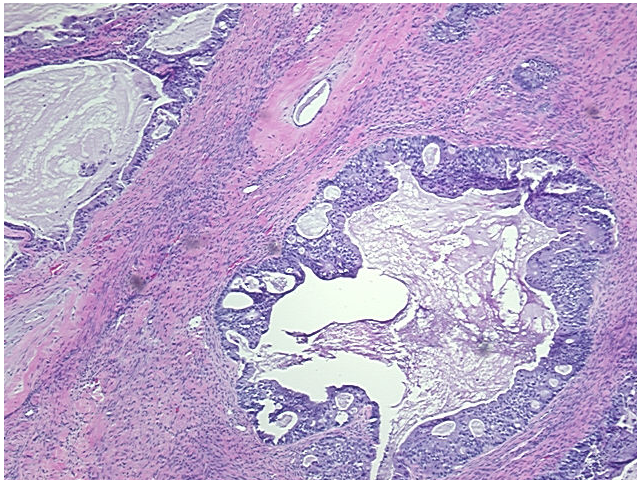
### Tissue FFPE Sections, Ovary: right

#### Product data:

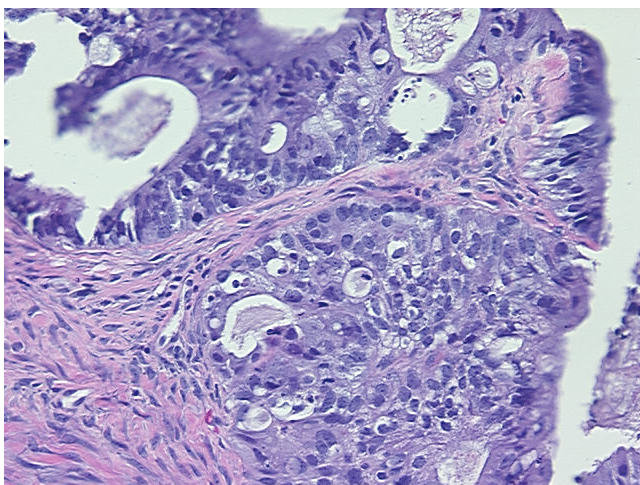
<b>Product Type:</b>	FFPE Sections
<b>Disease State:</b>	Other Disease
<b>Diagnosis Category:</b>	Borderline Ovarian Tumor
<b>Tissue:</b>	Ovary
<b>Frozen Sample ID:</b>	PA00003BA4
<b>Case ID:</b>	CU0000005299
<b>Tissue of Origin:</b>	Ovary: right
<b>Site of Finding:</b>	Ovary: right
<b>Appearance:</b>	T
<b>Sample Diagnosis (from Pathology Verification):</b>	Tumor of ovary, mucinous, borderline
<b>Normal:</b>	20%
<b>Lesional:</b>	0%
<b>Tumor:</b>	40%
<b>Tumor Hypo/Acellular Stroma:</b>	30%
<b>Tumor Hypercellular Stroma:</b>	10%
<b>Necrosis:</b>	0%
<b>CASE Diagnosis (from medical center path report):</b>	Tumor of ovary, mucinous, borderline



<b>Age:</b>	68
<b>Gender:</b>	Female
<b>Tumor Grade:</b>	Not Reported
<b>Minimum Stage Grouping:</b>	IA
<b>T (Extent of Primary Tumor):</b>	T1a
<b>N (Lymph node metastasis):</b>	NX
<b>M (Distant metastasis):</b>	MX
<b>Storage:</b>	Store FFPE tissue sections at +4°C.
<b>Stability:</b>	All FFPE tissue sections are stable for 1 year from date of purchase.

**Product images:**

4x Image



20x Image