

## Product datasheet for **CS804852**

### Tissue FFPE Sections, Esophagus

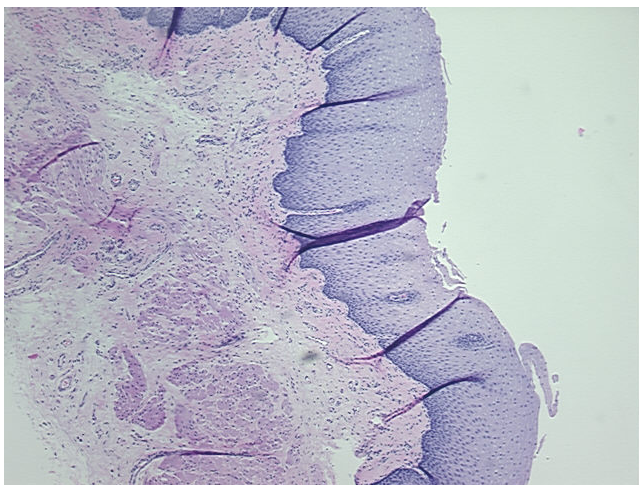
#### Product data:

|   |  |
|---|--|
| Product Type:                                     | FFPE Sections                                  |
| Disease State:                                    | Normal   |
| Diagnosis Category:                               | Normal   |
| Tissue:   | Esophagus                                      |
| Frozen Sample ID:                                 | PA10FCFC79                                     |
| Case ID:  | CU0000005290                                   |
| Tissue of Origin:                                 | Esophagus                                      |
| Site of Finding:                                  | Esophagus                                      |
| Appearance:                                       | R  |
| Sample Diagnosis (from Pathology Verification):   | Within normal limits                           |
| Normal:   | 100%   |
| Lesional:   | 0%   |
| Tumor:  | 0%   |
| Tumor Hypo/Acellular Stroma:                      | 0%   |
| Tumor Hypercellular Stroma:                       | 0%   |
| Necrosis:   | 0%   |
| Pathology Verification notes from H&E review:     | 45% squamous mucosa, 55% submucosa and muscle. |
| CASE Diagnosis (from medical center path report): | Adenocarcinoma of gastroesophageal junction    |
| Age:  | 43   |
| Gender:   | Female   |
| Tumor Grade:                                      | AJCC G3: Poorly differentiated                 |

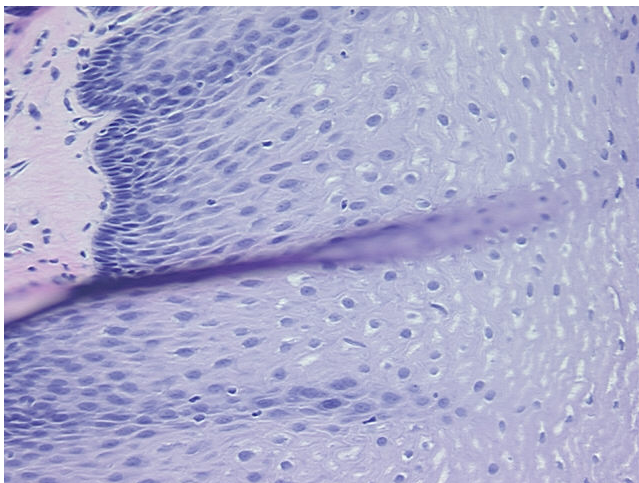


[View online »](#)

|                              |   |
|------------------------------|---|
| Minimum Stage Grouping:      | III   |
| T (Extent of Primary Tumor): | T3  |
| N (Lymph node metastasis):   | N1  |
| M (Distant metastasis):      | MX  |
| Storage:                     | Store FFPE tissue sections at +4°C.                                   |
| Stability:                   | All FFPE tissue sections are stable for 1 year from date of purchase. |

**Product images:**

4x Image



20x Image