

Product datasheet for **CS804808**

Tissue FFPE Sections, Lung

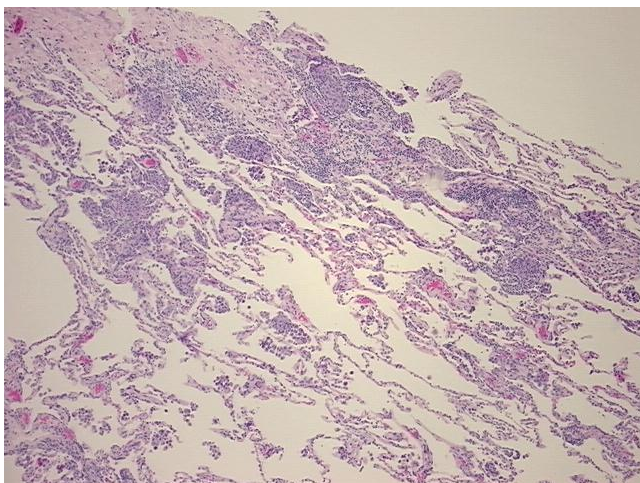
Product data:

Product Type:	FFPE Sections
Disease State:	Other Disease
Diagnosis Category:	Granuloma
Tissue:	Lung
Frozen Sample ID:	PA0F3339E4
Case ID:	CU0000005278
Tissue of Origin:	Lung
Site of Finding:	Lung
Appearance:	L
Sample Diagnosis (from Pathology Verification):	Granuloma of lung
Normal:	25%
Lesional:	75%
Tumor:	0%
Tumor Hypo/Acellular Stroma:	0%
Tumor Hypercellular Stroma:	0%
Necrosis:	0%
Pathology Verification notes from H&E review:	90% alveoli, 10% bronchioles, Numerous non-necrotizing, poorly formed granulomas are seen within interlobular septa.
CASE Diagnosis (from medical center path report):	Adenocarcinoma of lung
Age:	72
Gender:	Female
Tumor Grade:	AJCC G2: Moderately differentiated

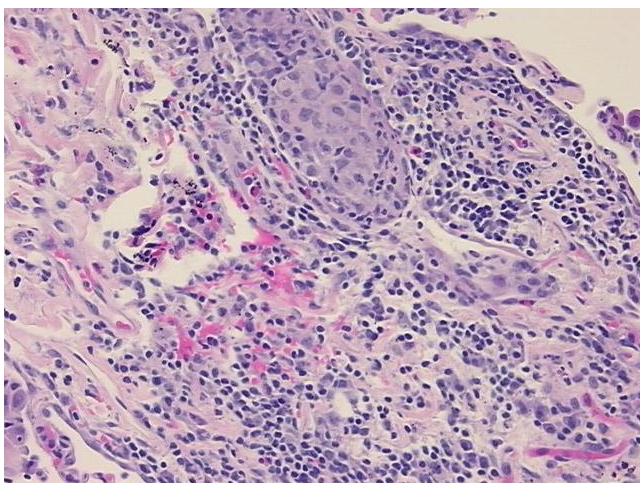


[View online »](#)

Minimum Stage Grouping:	IB
T (Extent of Primary Tumor):	T2
N (Lymph node metastasis):	N0
M (Distant metastasis):	MX
Storage:	Store FFPE tissue sections at +4°C.
Stability:	All FFPE tissue sections are stable for 1 year from date of purchase.

Product images:

4x Image



20x Image