

Product datasheet for **CS804763**

Tissue FFPE Sections, Pancreas

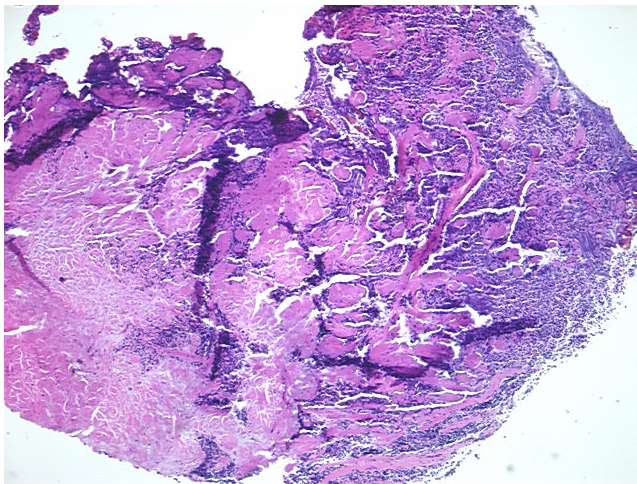
Product data:

Product Type:	FFPE Sections
Disease State:	Cancer
Diagnosis Category:	Carcinoid/Neuroendocrine Tumors
Tissue:	Pancreas
Frozen Sample ID:	PA00003B3F
Case ID:	CU0000005268
Tissue of Origin:	Pancreas
Site of Finding:	Lymph node
Appearance:	T
Sample Diagnosis (from Pathology Verification):	Tumor of pancreas, neuroendocrine, metastatic
Normal:	0%
Lesional:	0%
Tumor:	40%
Tumor Hypo/Acellular Stroma:	55%
Tumor Hypercellular Stroma:	5%
Necrosis:	0%
CASE Diagnosis (from medical center path report):	Tumor of pancreas, neuroendocrine, metastatic
Age:	37
Gender:	Female
Tumor Grade:	Not Reported
Minimum Stage Grouping:	Not Reported

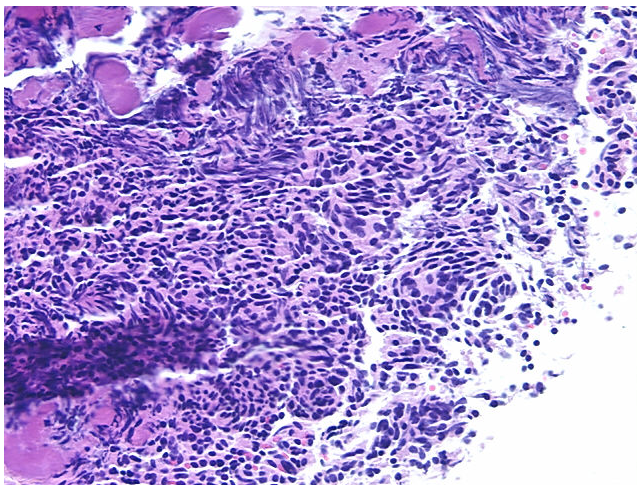


[View online »](#)

T (Extent of Primary Tumor):	Not Reported
N (Lymph node metastasis):	Not Reported
M (Distant metastasis):	Not Reported
Diagnostic Test Results:	Cytokeratin (Pan) ~ Keratin, Pan ! by IHC,Negative; p53 oncoprotein ~ TP53 ! by IHC,Positive; Neuron specific enolase ~ NSE ! by IHC,Positive; Synaptophysin ~ SYN ! by IHC,Positive; Chromogranin A ~ Parathyroid secretory protein 1 ! by IHC,Posit
Storage:	Store FFPE tissue sections at +4°C.
Stability:	All FFPE tissue sections are stable for 1 year from date of purchase.

Product images:

4x Image



20x Image