

## Product datasheet for **CS804640**

### Tissue FFPE Sections, Skin

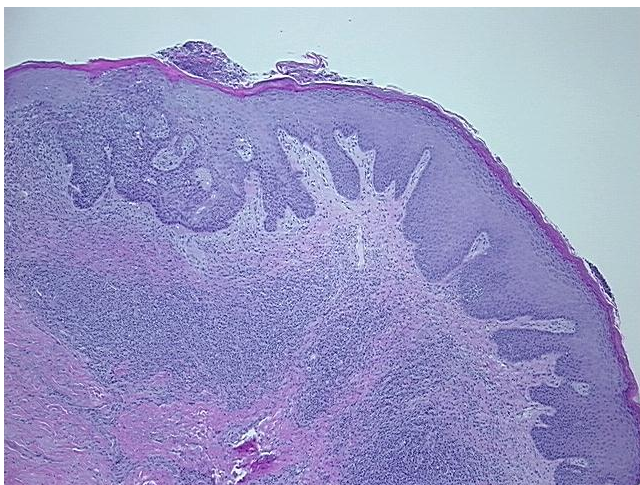
#### Product data:

Product Type:	FFPE Sections
Disease State:	Cancer
Diagnosis Category:	Skin Cancer
Tissue:	Skin
Frozen Sample ID:	PA00003ACA
Case ID:	CU0000005228
Tissue of Origin:	Skin
Site of Finding:	Skin
Appearance:	T
Sample Diagnosis (from Pathology Verification):	Carcinoma of skin, basal cell
Normal:	95%
Lesional:	0%
Tumor:	5%
Tumor Hypo/Acellular Stroma:	0%
Tumor Hypercellular Stroma:	0%
Necrosis:	0%
Pathology Verification notes from H&E review:	Inflammation: Severe Lymphoplasmacytic infiltrate; Non Tumor Structures: 80% Dermis, 15% Epidermis, 5% Subcutaneous tissue; Other Features/Comments: Sample size: 5 mm x 2 mm
CASE Diagnosis (from medical center path report):	Carcinoma of skin, basal cell
Age:	45
Gender:	Not specified
Tumor Grade:	Not Reported

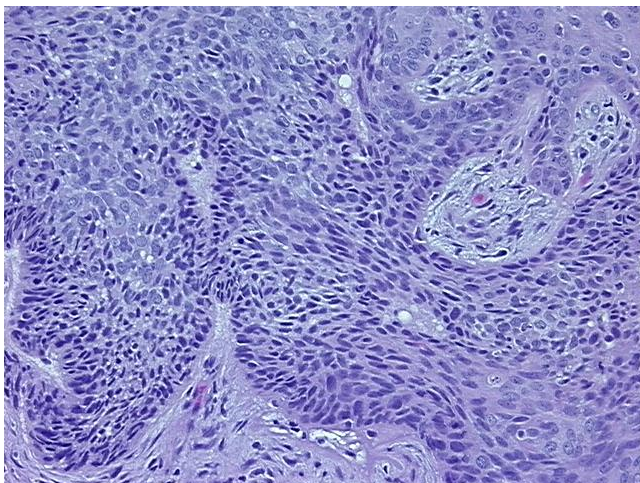


[View online »](#)

Minimum Stage Grouping:	II
T (Extent of Primary Tumor):	T2
N (Lymph node metastasis):	NX
M (Distant metastasis):	MX
Storage:	Store FFPE tissue sections at +4°C.
Stability:	All FFPE tissue sections are stable for 1 year from date of purchase.

**Product images:**

4x Image



20x Image