

## Product datasheet for **CS804566**

### Tissue FFPE Sections, Endometriotic tissue

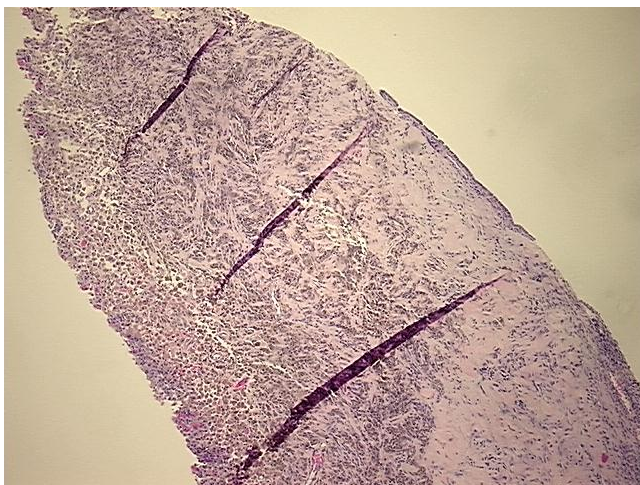
#### Product data:

|   |   |
|---|---|
| Product Type:                                     | FFPE Sections                             |
| Disease State:                                    | Other Disease                             |
| Diagnosis Category:                               | Endometriosis                             |
| Tissue:   | Endometriotic tissue                      |
| Frozen Sample ID:                                 | PA0F32FDC2                                |
| Case ID:  | CU0000005212                              |
| Tissue of Origin:                                 | Endometriotic tissue                      |
| Site of Finding:                                  | Ovary                                     |
| Appearance:                                       | L   |
| Sample Diagnosis (from Pathology Verification):   | Endometriosis                             |
| Normal:   | 60%                                       |
| Lesional:   | 40%                                       |
| Tumor:  | 0%  |
| Tumor Hypo/Acellular Stroma:                      | 0%  |
| Tumor Hypercellular Stroma:                       | 0%  |
| Necrosis:   | 0%  |
| Pathology Verification notes from H&E review:     | Non Tumor Structures: 100% Ovarian stroma |
| CASE Diagnosis (from medical center path report): | Adenocarcinoma of ovary, endometrioid     |
| Age:  | 52  |
| Gender:   | Female                                    |
| Tumor Grade:                                      | FIGO G2: Moderately differentiated        |

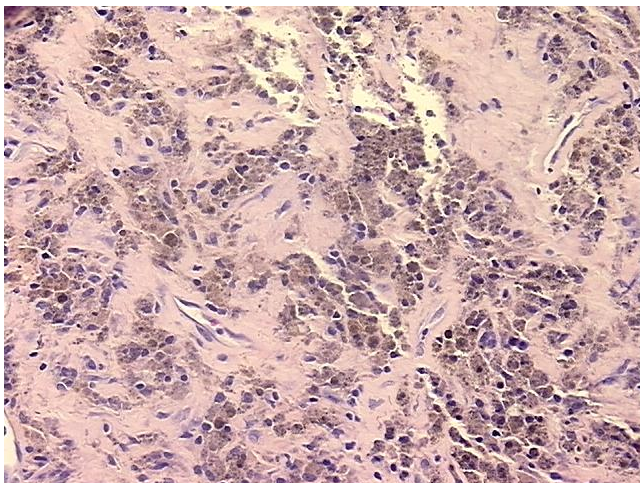


[View online »](#)

|                              |   |
|------------------------------|---|
| Minimum Stage Grouping:      | IA  |
| T (Extent of Primary Tumor): | T1a   |
| N (Lymph node metastasis):   | N0  |
| M (Distant metastasis):      | MX  |
| Storage:                     | Store FFPE tissue sections at +4°C.                                   |
| Stability:                   | All FFPE tissue sections are stable for 1 year from date of purchase. |

**Product images:**

4x Image



20x Image