

Product datasheet for CS804506

Tissue FFPE Sections, Uterus

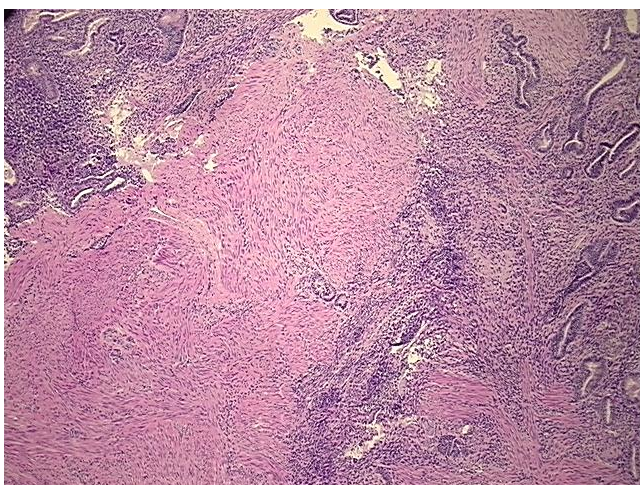
Product data:

Product Type:	FFPE Sections
Disease State:	Other Disease
Diagnosis Category:	Endometritis
Tissue:	Uterus
Frozen Sample ID:	PA15478429
Case ID:	CU0000005186
Tissue of Origin:	Uterus
Site of Finding:	Uterus
Appearance:	L
Sample Diagnosis (from Pathology Verification):	Endometritis
Normal:	20%
Lesional:	80%
Tumor:	0%
Tumor Hypo/Acellular Stroma:	0%
Tumor Hypercellular Stroma:	0%
Necrosis:	0%
Pathology Verification notes from H&E review:	Inflammation: Mild plasma cells; Other Features/Comments: proliferative endometrium with plasma cell infiltration in this section
CASE Diagnosis (from medical center path report):	Carcinoma of ovary, endometrioid
Age:	31
Gender:	Female
Tumor Grade:	FIGO G2: Moderately differentiated

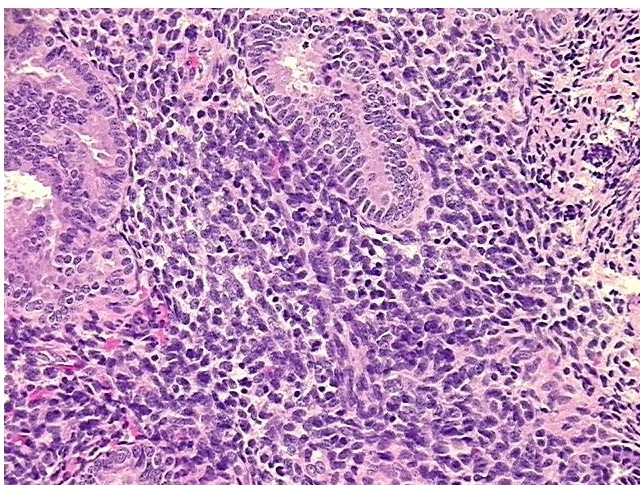


[View online »](#)

Minimum Stage Grouping:	IIIC
T (Extent of Primary Tumor):	T1c
N (Lymph node metastasis):	N1
M (Distant metastasis):	MX
Storage:	Store FFPE tissue sections at +4°C.
Stability:	All FFPE tissue sections are stable for 1 year from date of purchase.

Product images:

4x Image



20x Image