

Product datasheet for **CS804466**

Tissue FFPE Sections, Lung

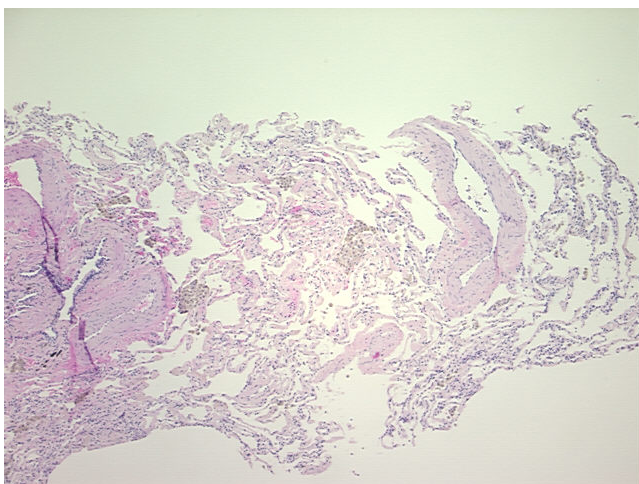
Product data:

Product Type:	FFPE Sections
Disease State:	Other Disease
Diagnosis Category:	Chronic Obstructive Pulmonary Disease (COPD)
Tissue:	Lung
Frozen Sample ID:	PA00003FC0
Case ID:	CU0000005169
Tissue of Origin:	Lung
Site of Finding:	Lung
Appearance:	L
Sample Diagnosis (from Pathology Verification):	Emphysematous changes
Normal:	0%
Lesional:	100%
Tumor:	0%
Tumor Hypo/Acellular Stroma:	0%
Tumor Hypercellular Stroma:	0%
Necrosis:	0%
Pathology Verification notes from H&E review:	85% alveoli, 0% bronchioles, 15% fibrovascular septae; Lung with emphysematous change
CASE Diagnosis (from medical center path report):	Carcinoma of lung, large cell
Age:	51
Gender:	Male
Tumor Grade:	Not Reported

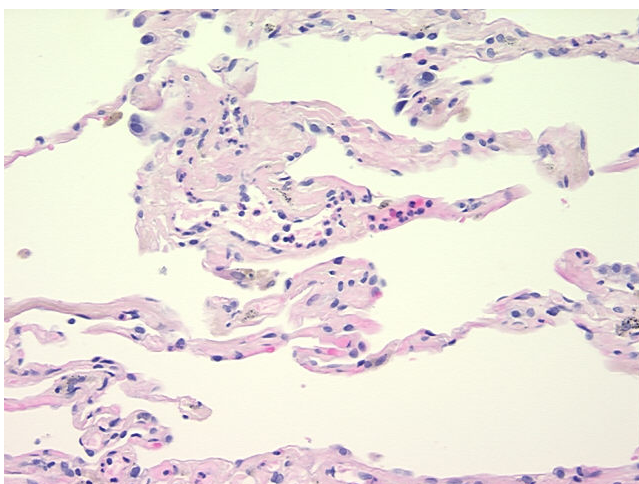


[View online »](#)

Minimum Stage Grouping:	IIIA
T (Extent of Primary Tumor):	T2
N (Lymph node metastasis):	N2
M (Distant metastasis):	MX
Diagnostic Test Results:	Cytokeratin 7 ~ CK7 ! by IHC,Positive; Cytokeratin 20 ~ CK20 ! by IHC,Negative; CD10 ~ CALLA ~ Common ALL antigen ! by IHC,Negative; Thyroid transcription factor 1 ~ TTF1 ! by IHC,Positive
Storage:	Store FFPE tissue sections at +4°C.
Stability:	All FFPE tissue sections are stable for 1 year from date of purchase.

Product images:

4x Image



20x Image