

Product datasheet for CS804366

Tissue FFPE Sections, Lung

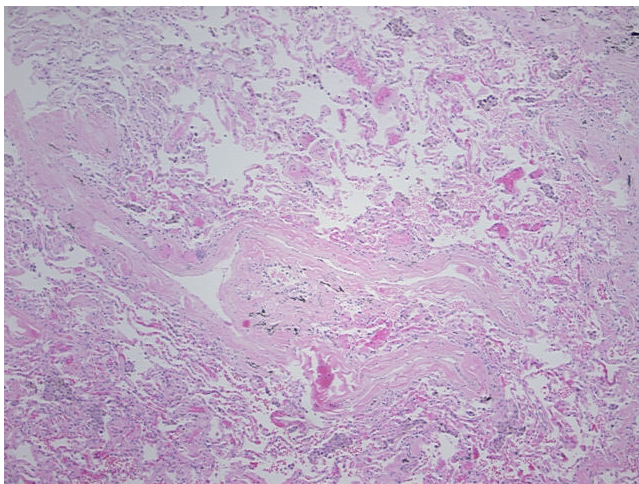
Product data:

Product Type:	FFPE Sections
Disease State:	Normal
Diagnosis Category:	Normal
Tissue:	Lung
Frozen Sample ID:	PA0F333940
Case ID:	CU0000005133
Tissue of Origin:	Lung
Site of Finding:	Lung
Appearance:	R
Sample Diagnosis (from Pathology Verification):	Within normal limits
Normal:	100%
Lesional:	0%
Tumor:	0%
Tumor Hypo/Acellular Stroma:	0%
Tumor Hypercellular Stroma:	0%
Necrosis:	0%
Pathology Verification notes from H&E review:	65% alveoli, 0% bronchioles, 35% fibrovascular septae
CASE Diagnosis (from medical center path report):	Carcinoma of lung, squamous cell
Age:	64
Gender:	Female
Tumor Grade:	AJCC G3: Poorly differentiated

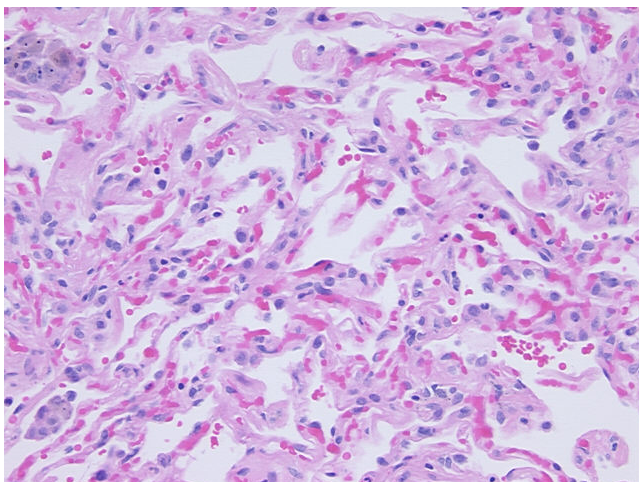


[View online »](#)

Minimum Stage Grouping:	IA
T (Extent of Primary Tumor):	T1
N (Lymph node metastasis):	N0
M (Distant metastasis):	MX
Diagnostic Test Results:	ERBB1 ~ EGFR ~ Epidermal growth factor receptor ! by IHC,Positive, moderate; HER2 ~ ERBB2 ~ Neu ! by IHC,Negative
Storage:	Store FFPE tissue sections at +4°C.
Stability:	All FFPE tissue sections are stable for 1 year from date of purchase.

Product images:

4x Image



20x Image