

Product datasheet for **CS804338**

Tissue FFPE Sections, Uterus

Product data:

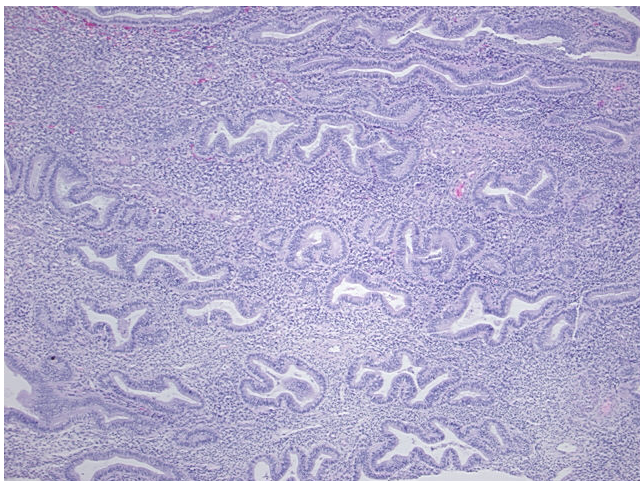
Product Type:	FFPE Sections
Disease State:	Other Disease
Diagnosis Category:	Adenosis
Tissue:	Myometrium
Frozen Sample ID:	PA00003E8A
Case ID:	CU0000005124
Tissue of Origin:	Uterus
Site of Finding:	Uterus
Appearance:	L
Sample Diagnosis (from Pathology Verification):	Adenomyosis of myometrium
Normal:	0%
Lesional:	100%
Tumor:	0%
Tumor Hypo/Acellular Stroma:	0%
Tumor Hypercellular Stroma:	0%
Necrosis:	0%
Pathology Verification notes from H&E review:	45% endometrial glands, 50% endometrial stroma, 5% myometrium; Proliferative phase endometrium
CASE Diagnosis (from medical center path report):	Adenomyosis of myometrium
Age:	32
Gender:	Female
Storage:	Store FFPE tissue sections at +4°C.



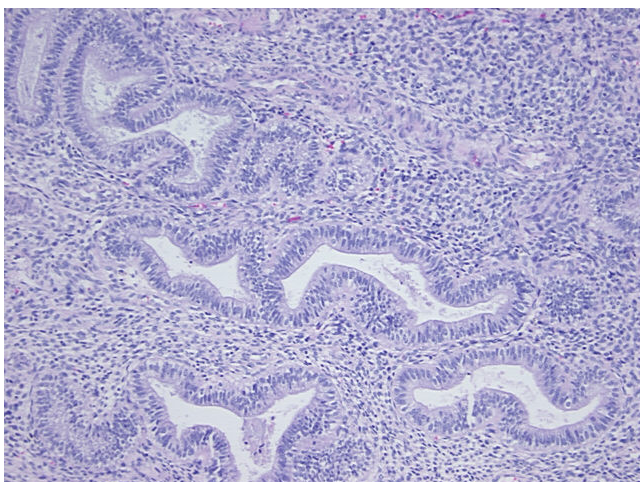
[View online »](#)

Stability: All FFPE tissue sections are stable for 1 year from date of purchase.

Product images:



4x Image



20x Image