

## Product datasheet for CS804196

### Tissue FFPE Sections, Ovary: left

#### Product data:

Product Type:	FFPE Sections
Disease State:	Other Disease
Diagnosis Category:	Benign Tumors
Tissue:	Ovary
Frozen Sample ID:	PA154767A8
Case ID:	CU0000005067
Tissue of Origin:	Ovary: left
Site of Finding:	Ovary: left
Appearance:	T
Sample Diagnosis (from Pathology Verification):	Tumor of ovary, granulosa cell
Normal:	0%
Lesional:	0%
Tumor:	97%
Tumor Hypo/Acellular Stroma:	0%
Tumor Hypercellular Stroma:	3%
Necrosis:	0%
CASE Diagnosis (from medical center path report):	Tumor of ovary, granulosa cell
Age:	48
Gender:	Female
Tumor Grade:	Not Reported
T (Extent of Primary Tumor):	T1



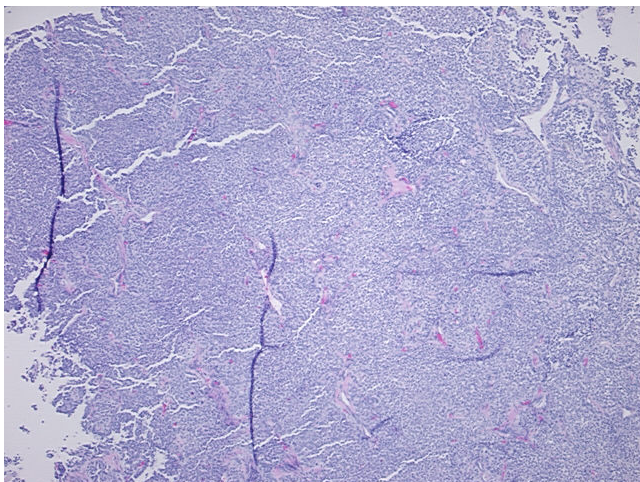
[View online »](#)

N (Lymph node metastasis): N1

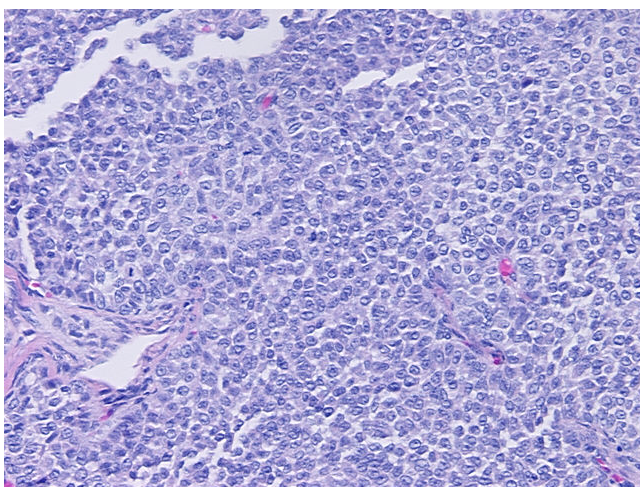
Storage: Store FFPE tissue sections at +4°C.

Stability: All FFPE tissue sections are stable for 1 year from date of purchase.

### Product images:



4x Image



20x Image