

Product datasheet for **CS804157**

Tissue FFPE Sections, Ovary: left

Product data:

Product Type:	FFPE Sections
Disease State:	Cancer
Diagnosis Category:	Ovarian Cancer
Tissue:	Ovary
Frozen Sample ID:	PA154767E1
Case ID:	CU0000005056
Tissue of Origin:	Ovary: left
Site of Finding:	Ovary: left
Appearance:	T
Sample Diagnosis (from Pathology Verification):	Carcinoma of ovary, endometrioid
Normal:	0%
Lesional:	0%
Tumor:	65%
Tumor Hypo/Acellular Stroma:	10%
Tumor Hypercellular Stroma:	25%
Necrosis:	0%
CASE Diagnosis (from medical center path report):	Carcinoma of ovary, endometrioid
Age:	61
Gender:	Female
Tumor Grade:	FIGO G1: Well differentiated
Minimum Stage Grouping:	IC



[View online »](#)

T (Extent of Primary Tumor): T1c

N (Lymph node metastasis): N0

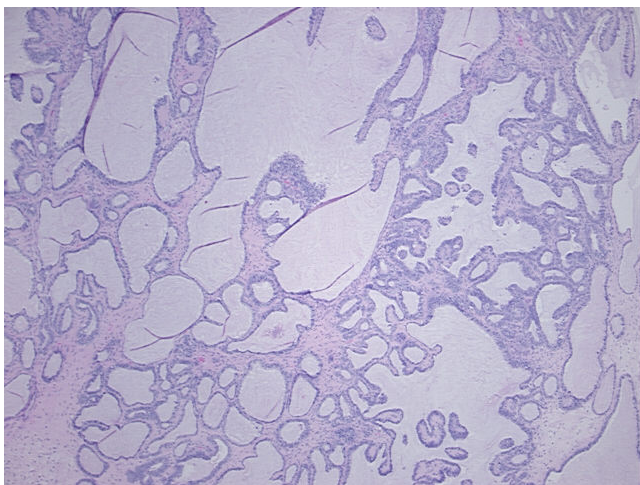
M (Distant metastasis): MX

Diagnostic Test Results: Proliferation index ~ PI,High; Progesterone receptor ~ PR ! by IHC,Positive; Estrogen receptor ~ ER ! by IHC,Positive; CD10 ~ CALLA ~ Common ALL antigen ! by IHC,Positive

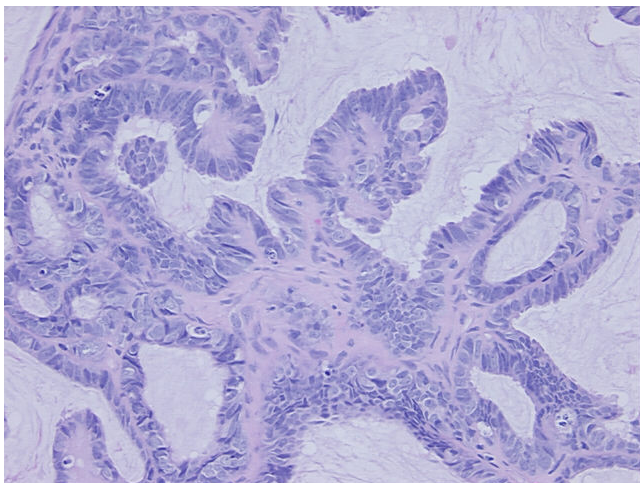
Storage: Store FFPE tissue sections at +4°C.

Stability: All FFPE tissue sections are stable for 1 year from date of purchase.

Product images:



4x Image



20x Image