

Product datasheet for **CS803988**

Tissue FFPE Sections, Colon: left

Product data:

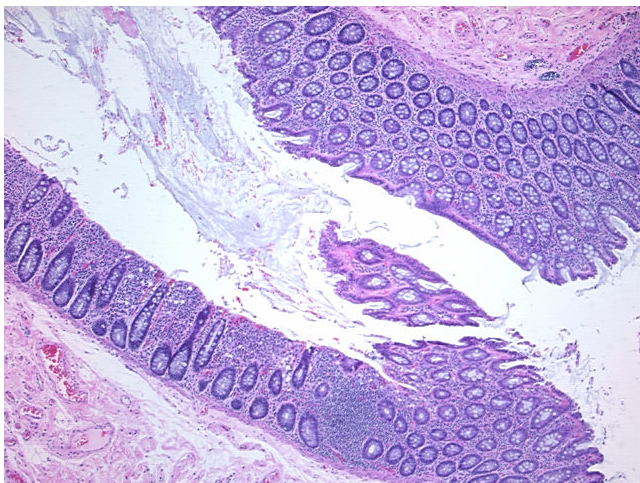
Product Type:	FFPE Sections
Disease State:	Other Disease
Diagnosis Category:	Diverticulitis
Tissue:	Colon
Frozen Sample ID:	PA000023AE
Case ID:	CU0000001994
Tissue of Origin:	Colon: left
Site of Finding:	Colon: left
Appearance:	L
Sample Diagnosis (from Pathology Verification):	Diverticulitis of colon
Normal:	0%
Lesional:	100%
Tumor:	0%
Tumor Hypo/Acellular Stroma:	0%
Tumor Hypercellular Stroma:	0%
Necrosis:	0%
Pathology Verification notes from H&E review:	Non Tumor Structures: 60% Mucosa, 20% Submucosa, 20% Muscle
CASE Diagnosis (from medical center path report):	Diverticulitis of colon
Age:	71
Gender:	Male
Storage:	Store FFPE tissue sections at +4°C.



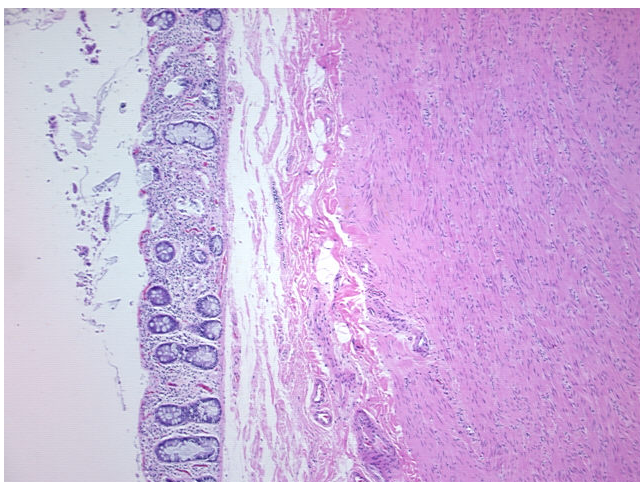
[View online »](#)

Stability: All FFPE tissue sections are stable for 1 year from date of purchase.

Product images:



4x Image



20x Image