

## Product datasheet for **CS803985**

### Tissue FFPE Sections, Cervix

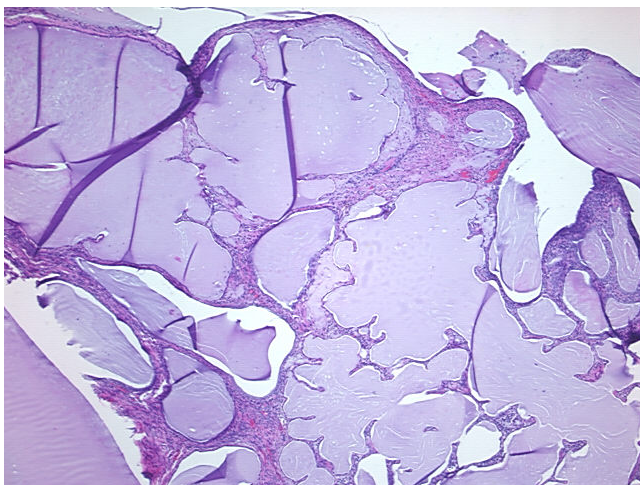
#### Product data:

Product Type:	FFPE Sections
Disease State:	Other Disease
Diagnosis Category:	Hyperplasia
Tissue:	Cervix
Frozen Sample ID:	PA15476433
Case ID:	CU0000001993
Tissue of Origin:	Cervix
Site of Finding:	Cervix
Appearance:	L
Sample Diagnosis (from Pathology Verification):	Glandular hyperplasia of cervix
Normal:	0%
Lesional:	100%
Tumor:	0%
Tumor Hypo/Acellular Stroma:	0%
Tumor Hypercellular Stroma:	0%
Necrosis:	0%
Pathology Verification notes from H&E review:	Cervix with 30% microglandular hyperplasia, 70% fibrovascular stroma; No transformation zone present
CASE Diagnosis (from medical center path report):	Adenocarcinoma of ovary, clear cell
Age:	87
Gender:	Female
Tumor Grade:	FIGO G3: Poorly differentiated

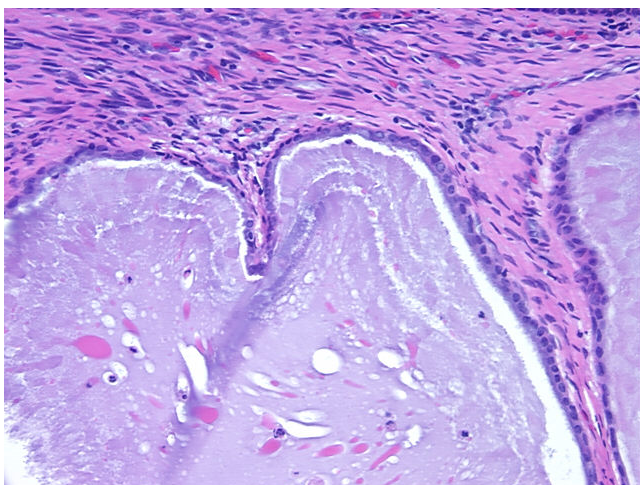


[View online »](#)

Minimum Stage Grouping:	IC
T (Extent of Primary Tumor):	T1c
N (Lymph node metastasis):	NX
M (Distant metastasis):	MX
Storage:	Store FFPE tissue sections at +4°C.
Stability:	All FFPE tissue sections are stable for 1 year from date of purchase.

**Product images:**

4x Image



20x Image