

## Product datasheet for CS803979

### Tissue FFPE Sections, Ovary: right

#### Product data:

Product Type:	FFPE Sections
Disease State:	Cancer
Diagnosis Category:	Ovarian Cancer
Tissue:	Ovary
Frozen Sample ID:	PA15476435
Case ID:	CU0000001993
Tissue of Origin:	Ovary: right
Site of Finding:	Ovary: right
Appearance:	T
Sample Diagnosis (from Pathology Verification):	Adenocarcinoma of ovary, clear cell
Normal:	0%
Lesional:	0%
Tumor:	60%
Tumor Hypo/Acellular Stroma:	30%
Tumor Hypercellular Stroma:	0%
Necrosis:	10%
CASE Diagnosis (from medical center path report):	Adenocarcinoma of ovary, clear cell
Age:	87
Gender:	Female
Tumor Grade:	FIGO G3: Poorly differentiated
Minimum Stage Grouping:	IC



[View online »](#)

T (Extent of Primary Tumor): T1c

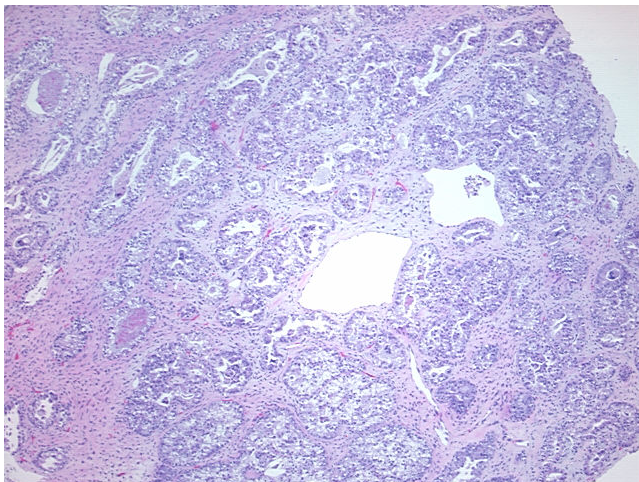
N (Lymph node metastasis): NX

M (Distant metastasis): MX

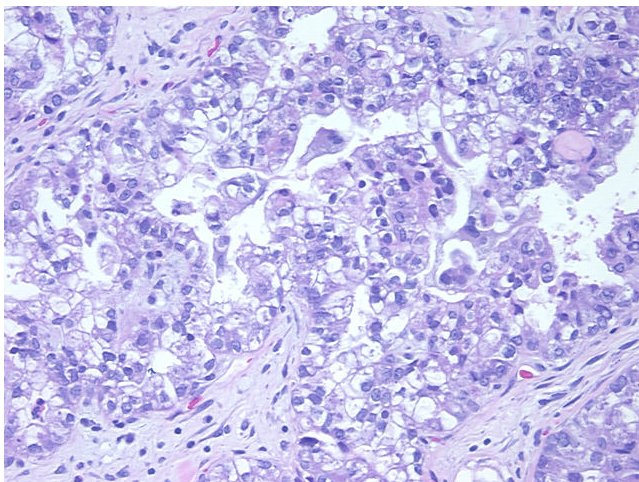
Storage: Store FFPE tissue sections at +4°C.

Stability: All FFPE tissue sections are stable for 1 year from date of purchase.

### Product images:



4x Image



20x Image