

## Product datasheet for **CS803859**

### Tissue FFPE Sections, Kidney

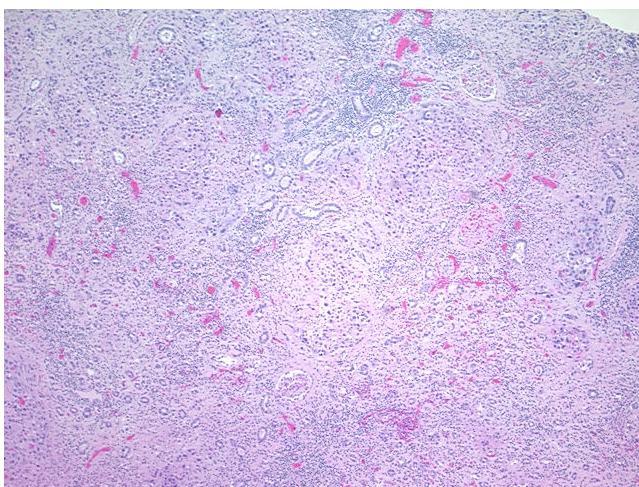
#### Product data:

|   |  |
|---|--|
| Product Type:                                     | FFPE Sections  |
| Disease State:                                    | Cancer   |
| Diagnosis Category:                               | Renal Cell Carcinoma                                   |
| Tissue:   | Kidney   |
| Frozen Sample ID:                                 | PA0000228C   |
| Case ID:  | CU0000001950   |
| Tissue of Origin:                                 | Kidney   |
| Site of Finding:                                  | Kidney   |
| Appearance:                                       | T  |
| Sample Diagnosis (from Pathology Verification):   | Carcinoma of kidney, renal cell, clear cell            |
| Normal:   | 68%  |
| Lesional:   | 0%   |
| Tumor:  | 30%  |
| Tumor Hypo/Acellular Stroma:                      | 0%   |
| Tumor Hypercellular Stroma:                       | 1%   |
| Necrosis:   | 1%   |
| Pathology Verification notes from H&E review:     | 68% normal component comprising 60% cortex, 8% medulla |
| CASE Diagnosis (from medical center path report): | Carcinoma of kidney, renal cell, clear cell            |
| Age:  | 61   |
| Gender:   | Female   |
| Tumor Grade:                                      | Fuhrman G4: Nuclei bizarre and multilobated            |

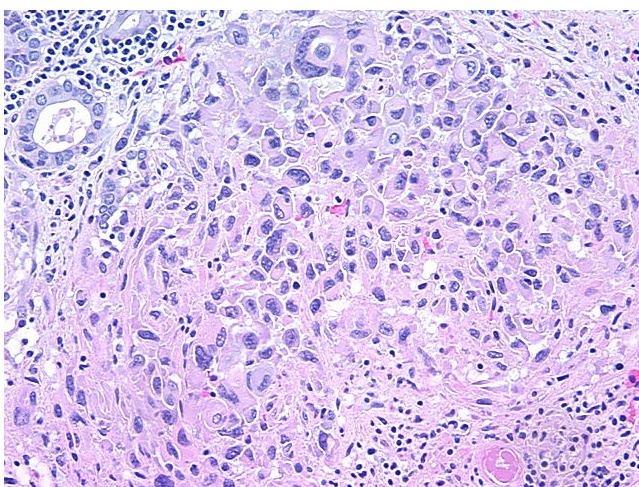


[View online »](#)

|                              |   |
|------------------------------|---|
| Minimum Stage Grouping:      | III   |
| T (Extent of Primary Tumor): | T3b   |
| N (Lymph node metastasis):   | N1  |
| M (Distant metastasis):      | MX  |
| Diagnostic Test Results:     | Ulex europaeus agglutinin I ~ UEA1 ! by IHC,Negative                  |
| Storage:                     | Store FFPE tissue sections at +4°C.                                   |
| Stability:                   | All FFPE tissue sections are stable for 1 year from date of purchase. |

**Product images:**

4x Image



20x Image