

Product datasheet for **CS803827**

Tissue FFPE Sections, Neural tissue

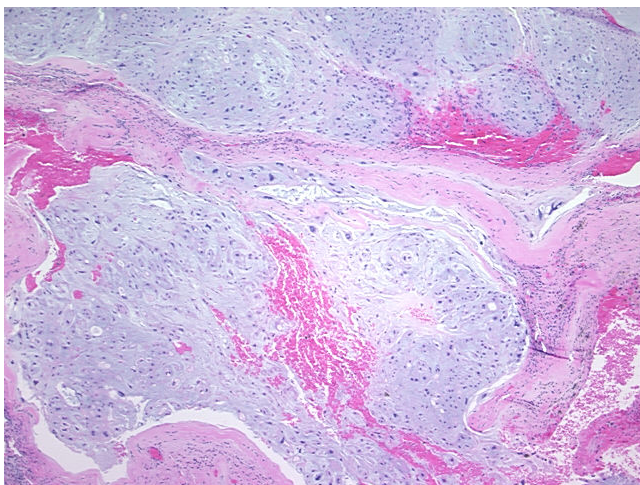
Product data:

Product Type:	FFPE Sections
Disease State:	Cancer
Diagnosis Category:	Chordoma
Tissue:	Neural tissue
Frozen Sample ID:	PA1547650B
Case ID:	CU0000001934
Tissue of Origin:	Neural tissue
Site of Finding:	Presacral region
Appearance:	T
Sample Diagnosis (from Pathology Verification):	Chordoma
Normal:	30%
Lesional:	0%
Tumor:	70%
Tumor Hypo/Acellular Stroma:	0%
Tumor Hypercellular Stroma:	0%
Necrosis:	0%
Pathology Verification notes from H&E review:	malignant sacral chordoma with marked nuclear pleomorphism and perivertebral fascia
CASE Diagnosis (from medical center path report):	Chordoma
Age:	66
Gender:	Male
Tumor Grade:	Not Reported

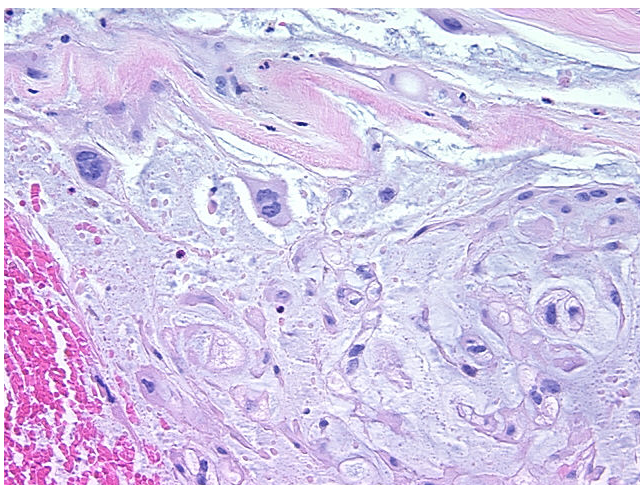


[View online »](#)

Minimum Stage Grouping:	IB
T (Extent of Primary Tumor):	T2
N (Lymph node metastasis):	NX
M (Distant metastasis):	MX
Storage:	Store FFPE tissue sections at +4°C.
Stability:	All FFPE tissue sections are stable for 1 year from date of purchase.

Product images:

4x Image



20x Image