

## Product datasheet for **CS803808**

### Tissue FFPE Sections, Stomach

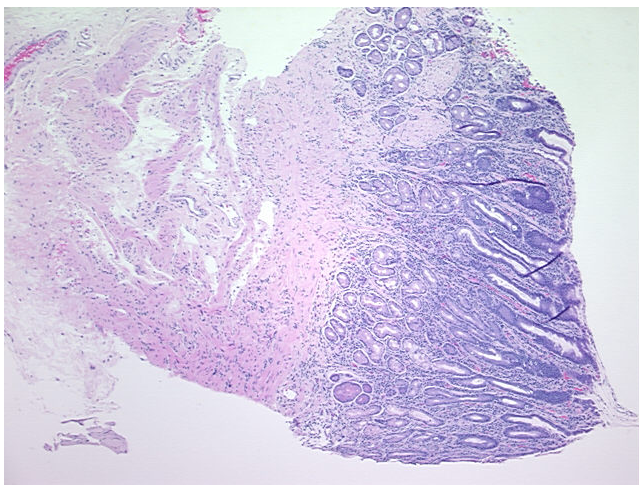
#### Product data:

Product Type:	FFPE Sections
Disease State:	Other Disease
Diagnosis Category:	Gastritis
Tissue:	Stomach
Frozen Sample ID:	PA00002229
Case ID:	CU0000001926
Tissue of Origin:	Stomach
Site of Finding:	Stomach
Appearance:	L
Sample Diagnosis (from Pathology Verification):	Gastritis, chronic
Normal:	0%
Lesional:	100%
Tumor:	0%
Tumor Hypo/Acellular Stroma:	0%
Tumor Hypercellular Stroma:	0%
Necrosis:	0%
Pathology Verification notes from H&E review:	50% mucosa, 50% submucosa; Chronic gastritis involving mostly mucosa
CASE Diagnosis (from medical center path report):	Adenocarcinoma of pancreas, ductal
Age:	76
Gender:	Male
Tumor Grade:	AJCC G2: Moderately differentiated

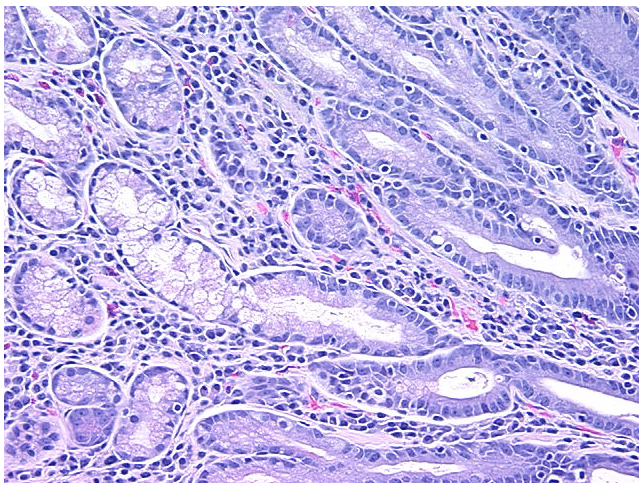


[View online »](#)

Minimum Stage Grouping:	IIB
T (Extent of Primary Tumor):	T3
N (Lymph node metastasis):	N1
M (Distant metastasis):	MX
Storage:	Store FFPE tissue sections at +4°C.
Stability:	All FFPE tissue sections are stable for 1 year from date of purchase.

**Product images:**

4x Image



20x Image