

## Product datasheet for **CS803577**

### Tissue FFPE Sections, Endometrium

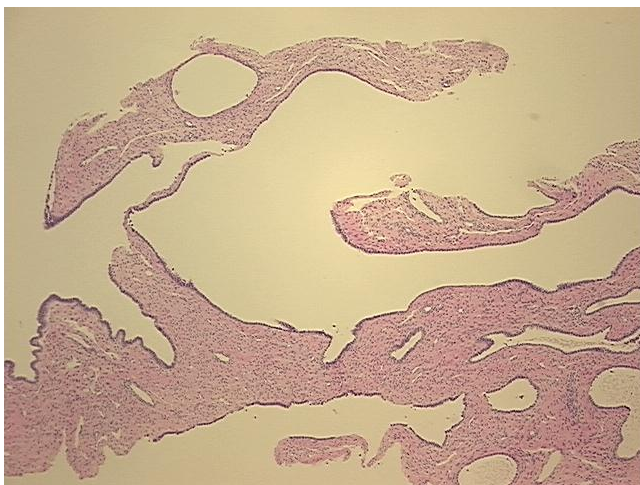
#### Product data:

Product Type:	FFPE Sections
Disease State:	Other Disease
Diagnosis Category:	Polyps
Tissue:	Endometrium
Frozen Sample ID:	PA00001D20
Case ID:	CU0000001853
Tissue of Origin:	Endometrium
Site of Finding:	Endometrium
Appearance:	L
Sample Diagnosis (from Pathology Verification):	Polyp of endometrium
Normal:	0%
Lesional:	100%
Tumor:	0%
Tumor Hypo/Acellular Stroma:	0%
Tumor Hypercellular Stroma:	0%
Necrosis:	0%
Pathology Verification notes from H&E review:	No normal architecture in lesional component
CASE Diagnosis (from medical center path report):	Adenocarcinoma of endometrium, serous
Age:	86
Gender:	Female
Tumor Grade:	FIGO G3: Poorly differentiated

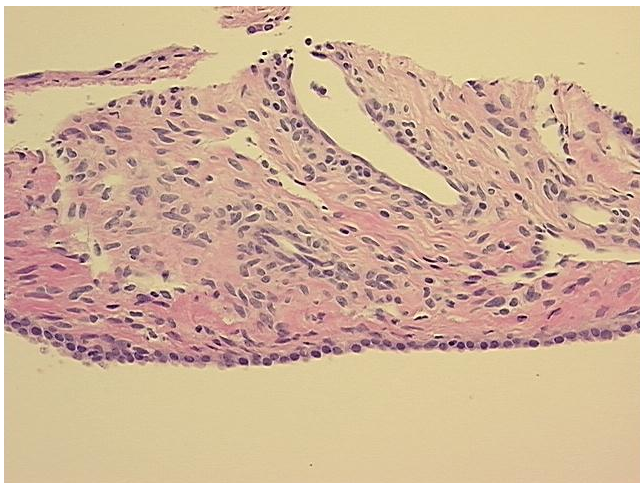


[View online »](#)

Minimum Stage Grouping:	IA
T (Extent of Primary Tumor):	T1a
N (Lymph node metastasis):	NX
M (Distant metastasis):	MX
Storage:	Store FFPE tissue sections at +4°C.
Stability:	All FFPE tissue sections are stable for 1 year from date of purchase.

**Product images:**

4x Image



20x Image