

Product datasheet for **CS803362**

Tissue FFPE Sections, Endometrium

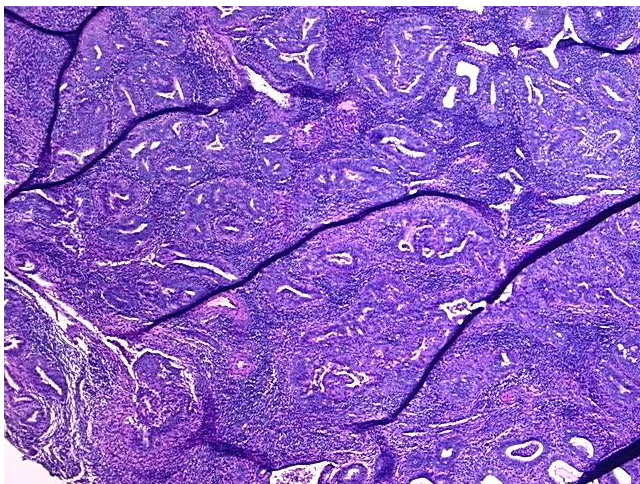
Product data:

Product Type:	FFPE Sections
Disease State:	Cancer
Diagnosis Category:	Endometrial Cancer
Tissue:	Endometrium
Frozen Sample ID:	PA00001DFF
Case ID:	CU0000001765
Tissue of Origin:	Endometrium
Site of Finding:	Endometrium
Appearance:	T
Sample Diagnosis (from Pathology Verification):	Adenocarcinoma of endometrium, squamous features
Normal:	55%
Lesional:	0%
Tumor:	40%
Tumor Hypo/Acellular Stroma:	0%
Tumor Hypercellular Stroma:	5%
Necrosis:	0%
Pathology Verification notes from H&E review:	tumor stroma: 100% mixed inflammatory cells; normal: 40% glands, 30% stroma, 30% myometrium, 0% serosa
CASE Diagnosis (from medical center path report):	Adenocarcinoma of endometrium, squamous features
Age:	46
Gender:	Female
Tumor Grade:	Not Reported

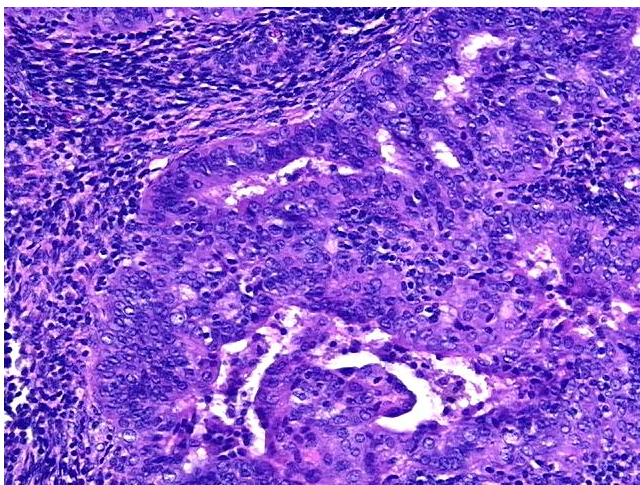


[View online »](#)

T (Extent of Primary Tumor):	Not Reported
N (Lymph node metastasis):	Not Reported
Storage:	Store FFPE tissue sections at +4°C.
Stability:	All FFPE tissue sections are stable for 1 year from date of purchase.

Product images:

4x Image



20x Image