

Product datasheet for **CS803352**

Tissue FFPE Sections, Ovary: right

Product data:

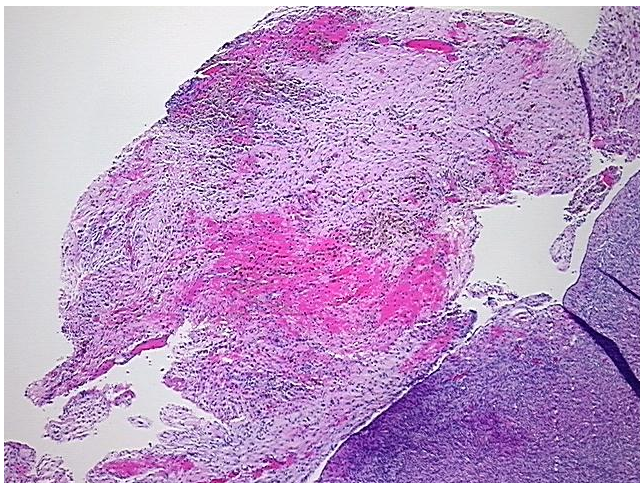
Product Type:	FFPE Sections
Disease State:	Other Disease
Diagnosis Category:	Cysts
Tissue:	Ovary
Frozen Sample ID:	PA00001B1B
Case ID:	CU0000001761
Tissue of Origin:	Ovary: right
Site of Finding:	Ovary: right
Appearance:	L
Sample Diagnosis (from Pathology Verification):	Cyst of ovary, corpus luteum
Normal:	90%
Lesional:	10%
Tumor:	0%
Tumor Hypo/Acellular Stroma:	0%
Tumor Hypercellular Stroma:	0%
Necrosis:	0%
Pathology Verification notes from H&E review:	normal: 30% ovarian stroma, 70% corpus albicans
CASE Diagnosis (from medical center path report):	Endometrium, proliferative
Age:	36
Gender:	Female
Storage:	Store FFPE tissue sections at +4°C.



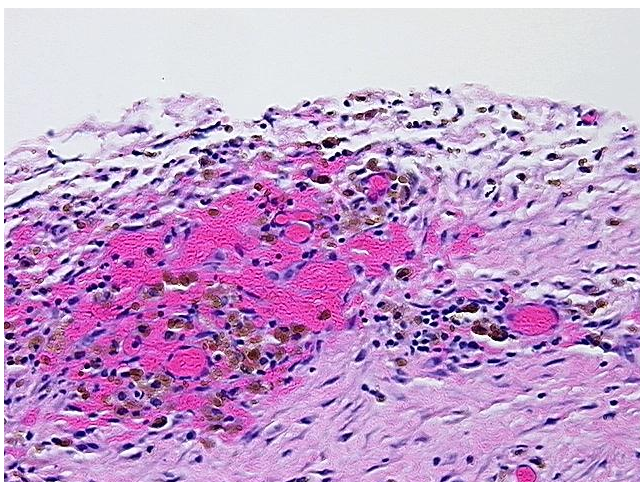
[View online »](#)

Stability: All FFPE tissue sections are stable for 1 year from date of purchase.

Product images:



4x Image



20x Image