

## Product datasheet for CS803232

### Tissue FFPE Sections, Cervix

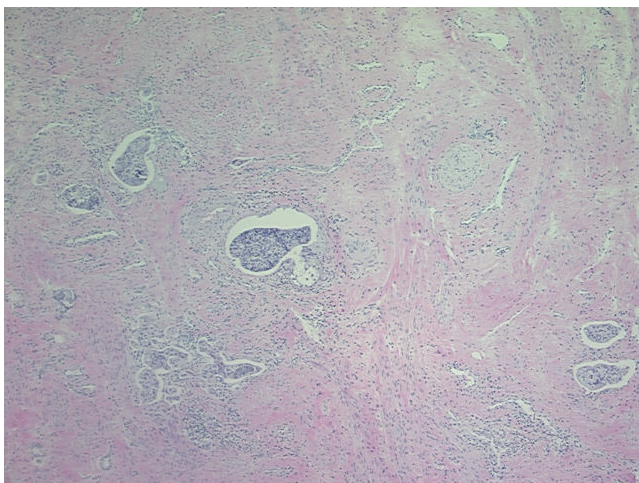
#### Product data:

Product Type:	FFPE Sections
Disease State:	Other Disease
Diagnosis Category:	Uterine Fibroids
Tissue:	Myometrium
Frozen Sample ID:	PA00001A09
Case ID:	CU0000001692
Tissue of Origin:	Cervix
Site of Finding:	Cervix
Appearance:	T
Sample Diagnosis (from Pathology Verification):	Leiomyoma of myometrium
Normal:	0%
Lesional:	0%
Tumor:	5%
Tumor Hypo/Acellular Stroma:	95%
Tumor Hypercellular Stroma:	0%
Necrosis:	0%
Pathology Verification notes from H&E review:	Metastatic adenocarcinoma present in cervical lymphatics; Likely endocervical primary
CASE Diagnosis (from medical center path report):	Adenocarcinoma of cervix
Age:	56
Gender:	Female
Tumor Grade:	FIGO G2: Moderately differentiated

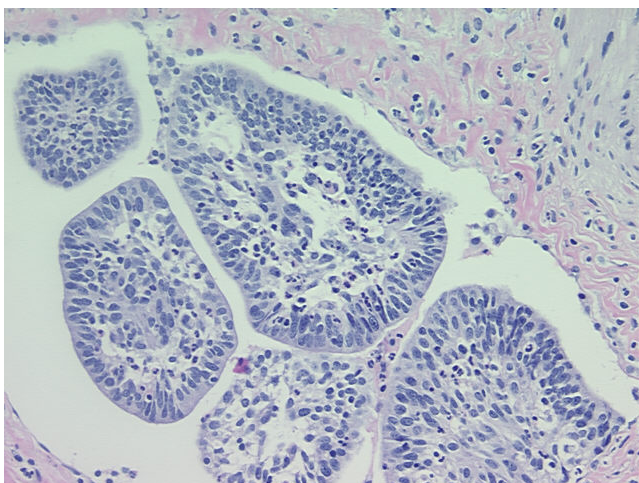


[View online »](#)

Minimum Stage Grouping:	IIIB
T (Extent of Primary Tumor):	TX
N (Lymph node metastasis):	N1
M (Distant metastasis):	MX
Storage:	Store FFPE tissue sections at +4°C.
Stability:	All FFPE tissue sections are stable for 1 year from date of purchase.

**Product images:**

4x Image



20x Image