

## Product datasheet for CS803139

### Tissue FFPE Sections, Spleen

#### Product data:

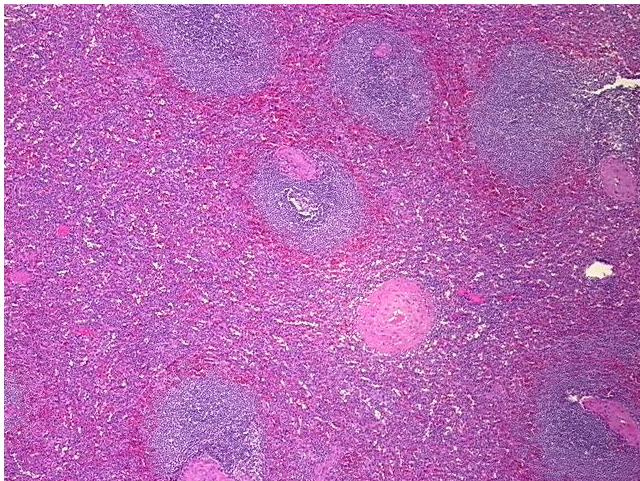
|   |  |
|---|--|
| Product Type:                                     | FFPE Sections                                      |
| Disease State:                                    | Other Disease                                      |
| Diagnosis Category:                               | Hyperplasia  |
| Tissue:   | Spleen   |
| Frozen Sample ID:                                 | PA00001919   |
| Case ID:  | CU0000001652                                       |
| Tissue of Origin:                                 | Spleen   |
| Site of Finding:                                  | Spleen   |
| Appearance:                                       | L  |
| Sample Diagnosis (from Pathology Verification):   | Lymphoid hyperplasia of spleen                     |
| Normal:   | 0%   |
| Lesional:   | 100%   |
| Tumor:  | 0%   |
| Tumor Hypo/Acellular Stroma:                      | 0%   |
| Tumor Hypercellular Stroma:                       | 0%   |
| Necrosis:   | 0%   |
| Pathology Verification notes from H&E review:     | Non Tumor Structures: 80% Red pulp, 20% White pulp |
| CASE Diagnosis (from medical center path report): | Pseudocyst of spleen                               |
| Age:  | 56   |
| Gender:   | Female   |
| Storage:  | Store FFPE tissue sections at +4°C.                |



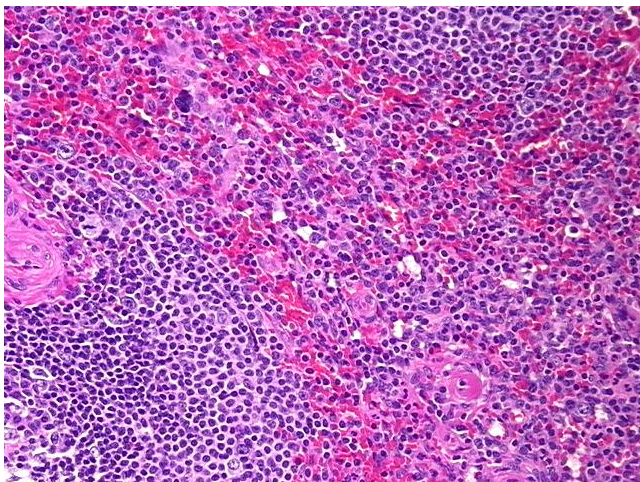
[View online »](#)

Stability: All FFPE tissue sections are stable for 1 year from date of purchase.

**Product images:**



4x Image



20x Image