

## Product datasheet for **CS803118**

### Tissue FFPE Sections, Lung

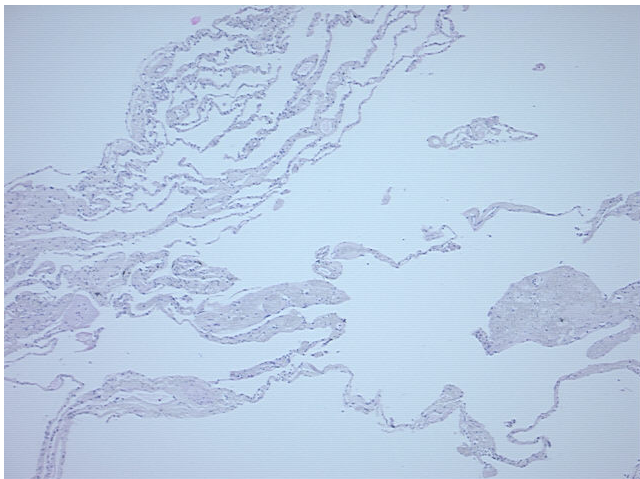
#### Product data:

|   |   |
|---|---|
| Product Type:                                     | FFPE Sections   |
| Disease State:                                    | Other Disease   |
| Diagnosis Category:                               | Chronic Obstructive Pulmonary Disease (COPD)                          |
| Tissue:   | Lung  |
| Frozen Sample ID:                                 | PA1547639F  |
| Case ID:  | CU0000001643  |
| Tissue of Origin:                                 | Lung  |
| Site of Finding:                                  | Lung  |
| Appearance:                                       | L   |
| Sample Diagnosis (from Pathology Verification):   | Emphysema   |
| Normal:   | 10%   |
| Lesional:   | 90%   |
| Tumor:  | 0%  |
| Tumor Hypo/Acellular Stroma:                      | 0%  |
| Tumor Hypercellular Stroma:                       | 0%  |
| Necrosis:   | 0%  |
| CASE Diagnosis (from medical center path report): | Emphysema   |
| Age:  | 71  |
| Gender:   | Male  |
| Storage:  | Store FFPE tissue sections at +4°C.                                   |
| Stability:  | All FFPE tissue sections are stable for 1 year from date of purchase. |

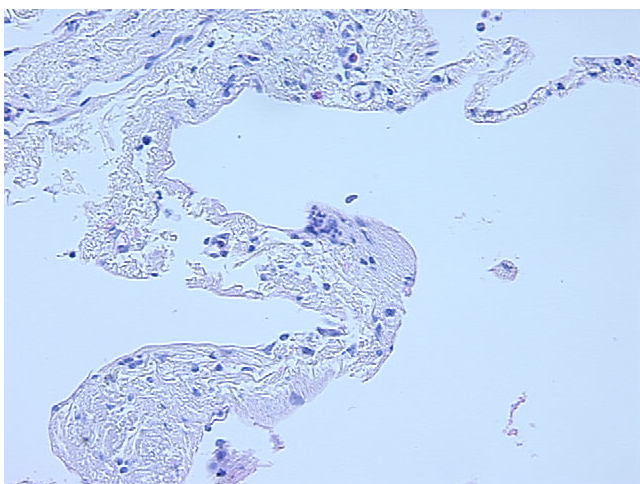


[View online »](#)

Product images:



4x Image



20x Image